



1367 West Briarwood Avenue
Littleton, CO 80120

MLS # 6212299
PRICE \$1,025,000

Welcome Home!



Single Family



4401 SQFT



4 Beds



4 Baths



2 Car



0.42 Acre

PROPERTY DETAILS

Exquisite, Custom Home nestled on a 18,000+ sq foot, corner lot, located in the Beautiful Briar Ridge enclave of Littleton. Fantastic Community! Outdoor playground awaits, just steps to Lee Gulch Trail, Ashbaugh pond, Highline Canal, parks, miles of bike & walking paths. All that Downtown Littleton has to offer a mere 5 minute drive. Excellent Schools!

- *Passive Solar Design for energy efficiency
- *Renewal by Andersen windows-Upper level new in 2020
- *NEW carpet in upper level & basement (July 2021)
- *Updated Kitchen & Bathrooms
- *Oversized 2 car garage w/ electric car charging
- *Roof-5 yrs *Water Heater-3 yrs
- *Seller to provide a Home Warranty at Closing



Sarah Crabtree

303-386-5449

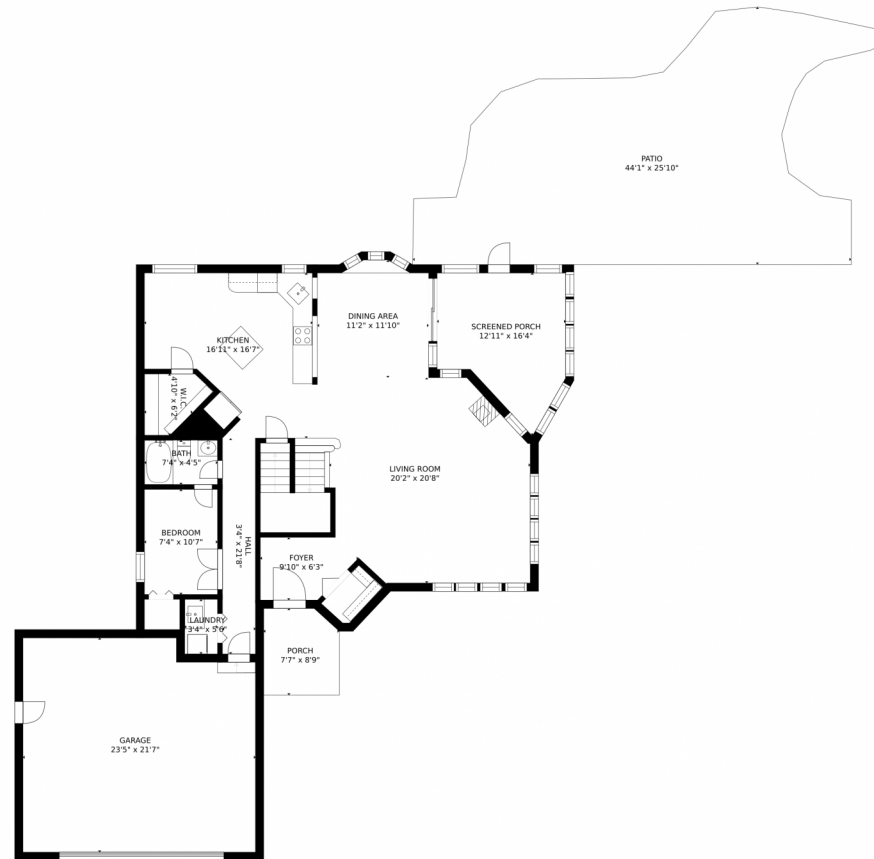
sarahcrabtree@door44realty.com



Scan code
for more
property
details



1367 West Briarwood Avenue, Littleton, CO 80120 — Main Level



GROSS INTERNAL AREA
FLOOR 1: 1179 sq. ft, FLOOR 2: 1185 sq. ft
FLOOR 3: 1031 sq. ft, EXCLUDED AREAS:
PATIO: 786 sq. ft, PORCH: 63 sq. ft
GARAGE: 484 sq. ft
TOTAL: 3395 sq. ft
SIZES AND DIMENSIONS ARE APPROXIMATE, ACTUAL MAY VARY.

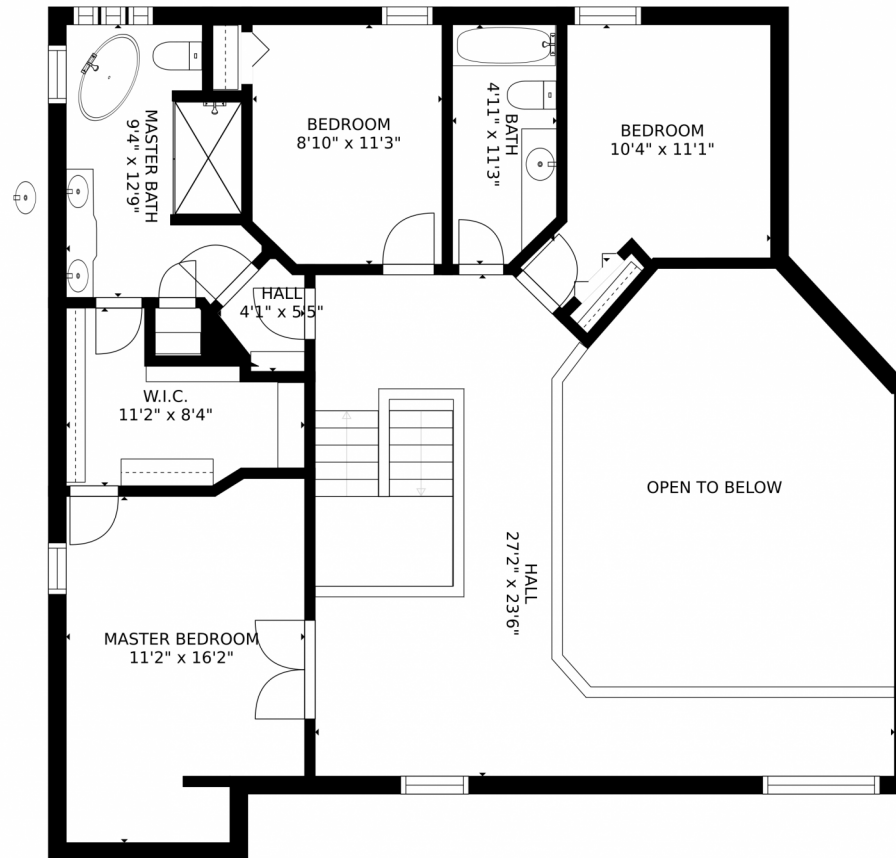
Disclaimer: Sizes and Dimensions are Approximate, Actual May Vary.



Sarah Crabtree
303-386-5449
sarahcrabtree@door44realty.com



1367 West Briarwood Avenue, Littleton, CO 80120 — Upper Level



GROSS INTERNAL AREA
FLOOR 1: 1179 sq. ft, FLOOR 2: 1185 sq. ft
FLOOR 3: 1031 sq. ft, EXCLUDED AREAS:
PATIO: 786 sq. ft, PORCH: 63 sq. ft
GARAGE: 484 sq. ft
TOTAL: 3395 sq. ft
SIZES AND DIMENSIONS ARE APPROXIMATE, ACTUAL MAY VARY.

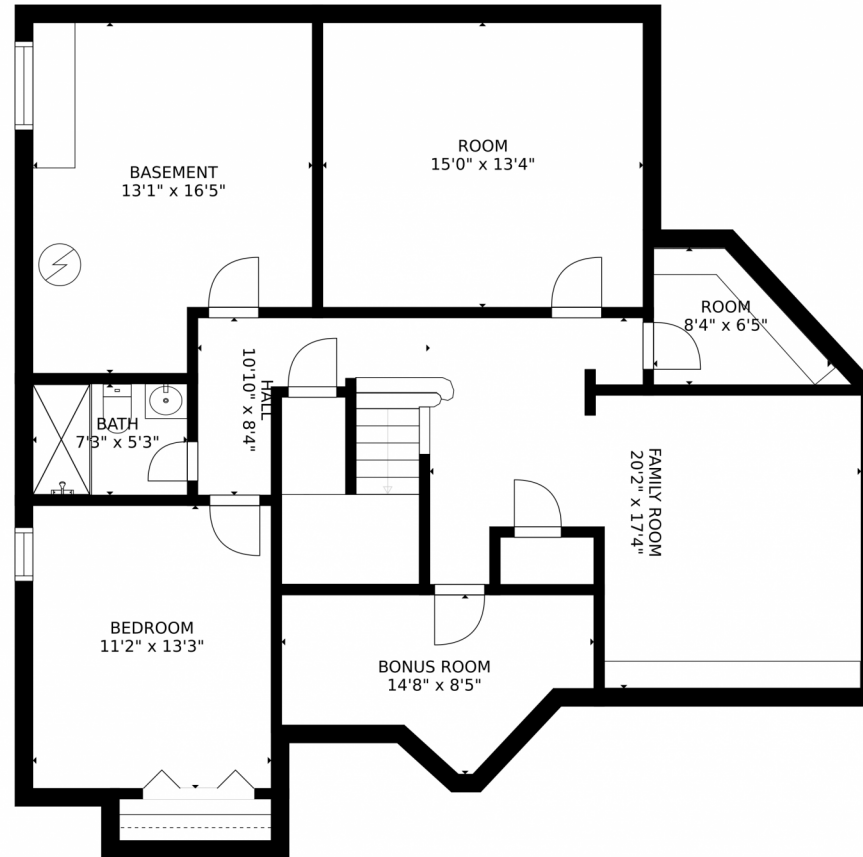
Disclaimer: Sizes and Dimensions are Approximate, Actual May Vary.



Sarah Crabtree
303-386-5449
sarahcrabtree@door44realty.com



1367 West Briarwood Avenue, Littleton, CO 80120 — Lower Level



GROSS INTERNAL AREA
FLOOR 1: 1179 sq. ft, FLOOR 2: 1185 sq. ft
FLOOR 3: 1031 sq. ft, EXCLUDED AREAS:
PATIO: 786 sq. ft, PORCH: 63 sq. ft
GARAGE: 484 sq. ft
TOTAL: 3395 sq. ft
SIZES AND DIMENSIONS ARE APPROXIMATE, ACTUAL MAY VARY.

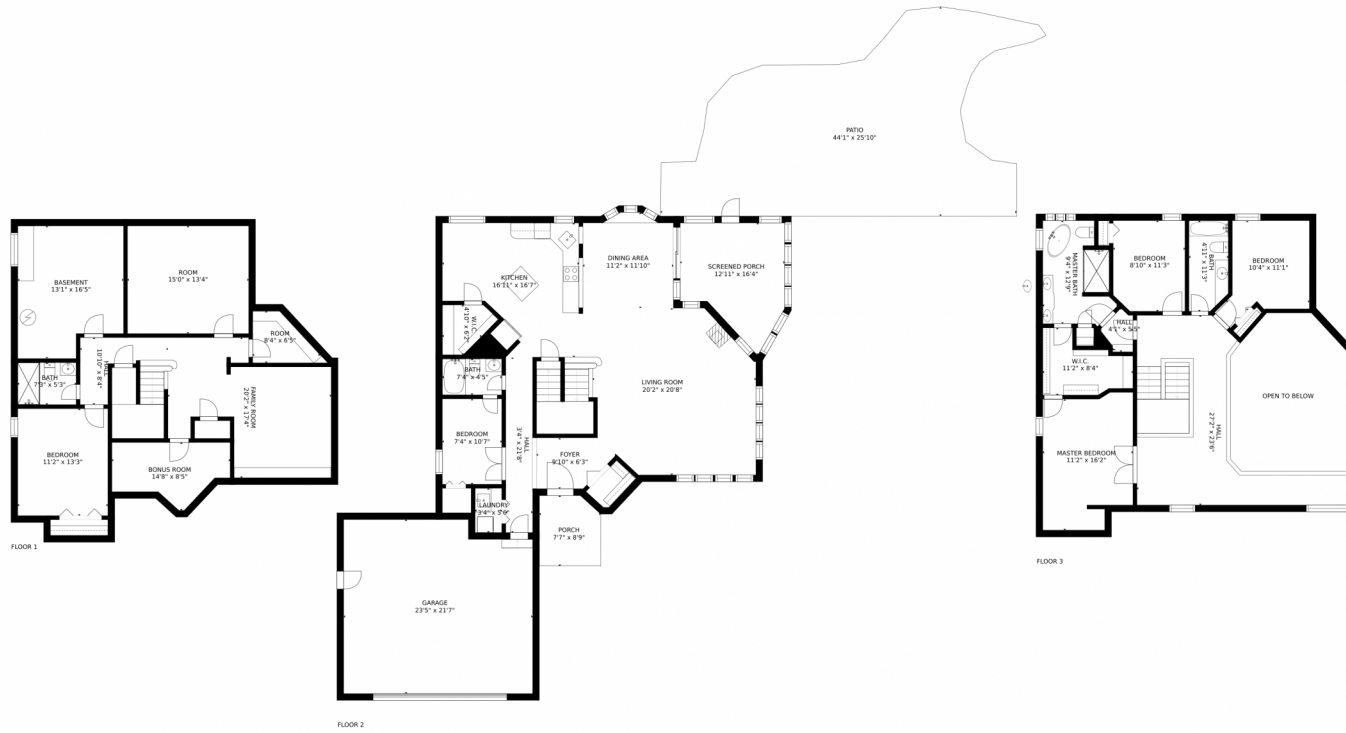
Disclaimer: Sizes and Dimensions are Approximate, Actual May Vary.



Sarah Crabtree
303-386-5449
sarahcrabtree@door44realty.com



1367 West Briarwood Avenue, Littleton, CO 80120 — All Levels



GROSS INTERNAL AREA
FLOOR 1: 1179 sq. ft. FLOOR 2: 1185 sq. ft.
FLOOR 3: 1031 sq. ft. EXCLUDED AREAS:
PATIO: 786 sq. ft. PORCH: 63 sq. ft.
GARAGE: 484 sq. ft.
TOTAL: 3395 sq. ft.
SIZES AND DIMENSIONS ARE APPROXIMATE, ACTUAL MAY VARY.

Disclaimer: Sizes and Dimensions are Approximate, Actual May Vary.



Sarah Crabtree
303-386-5449
sarahcrabtree@door44realty.com

