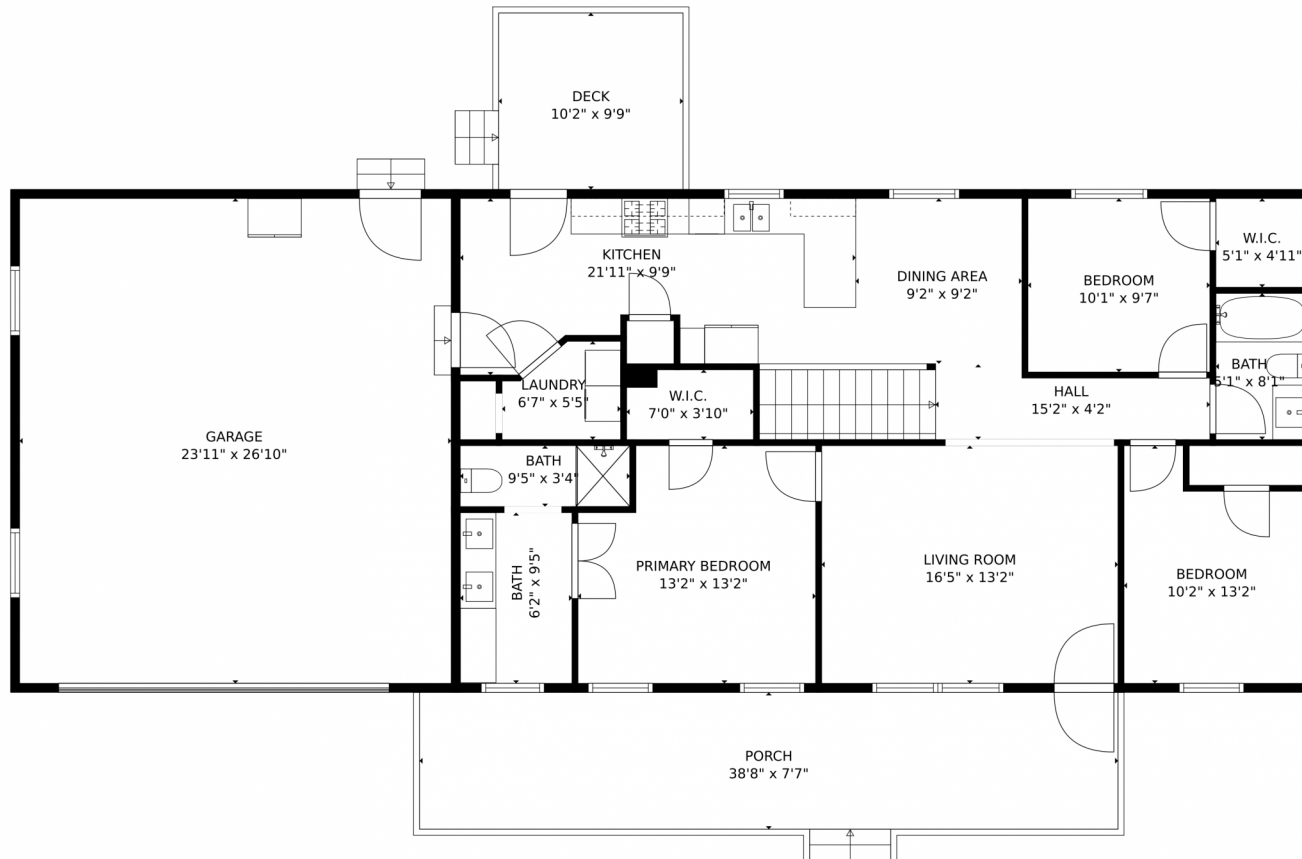


# 11159 Pine Meadows Drive, Kiowa, CO 80117 – Main Level



**TOTAL: 2119 sq. ft**

Below Ground: 413 sq. ft, FLOOR 2: 446 sq. ft, FLOOR 3: 1260 sq. ft

EXCLUDED AREAS: UNFINISHED BASEMENT: 847 sq. ft, STORAGE: 50 sq. ft, SCREENED PORCH: 93 sq. ft,

GARAGE: 641 sq. ft, PORCH: 293 sq. ft, DECK: 100 sq. ft

MEASUREMENTS CALCULATED BY V1Photos.com ARE DEEMED HIGHLY RELIABLE BUT NOT GUARANTEED.



Disclaimer: Sizes and Dimensions are Approximate, Actual May Vary.



**Tatyana Sturm**

720-350-5909

tatyana@exitrealtydtc.com

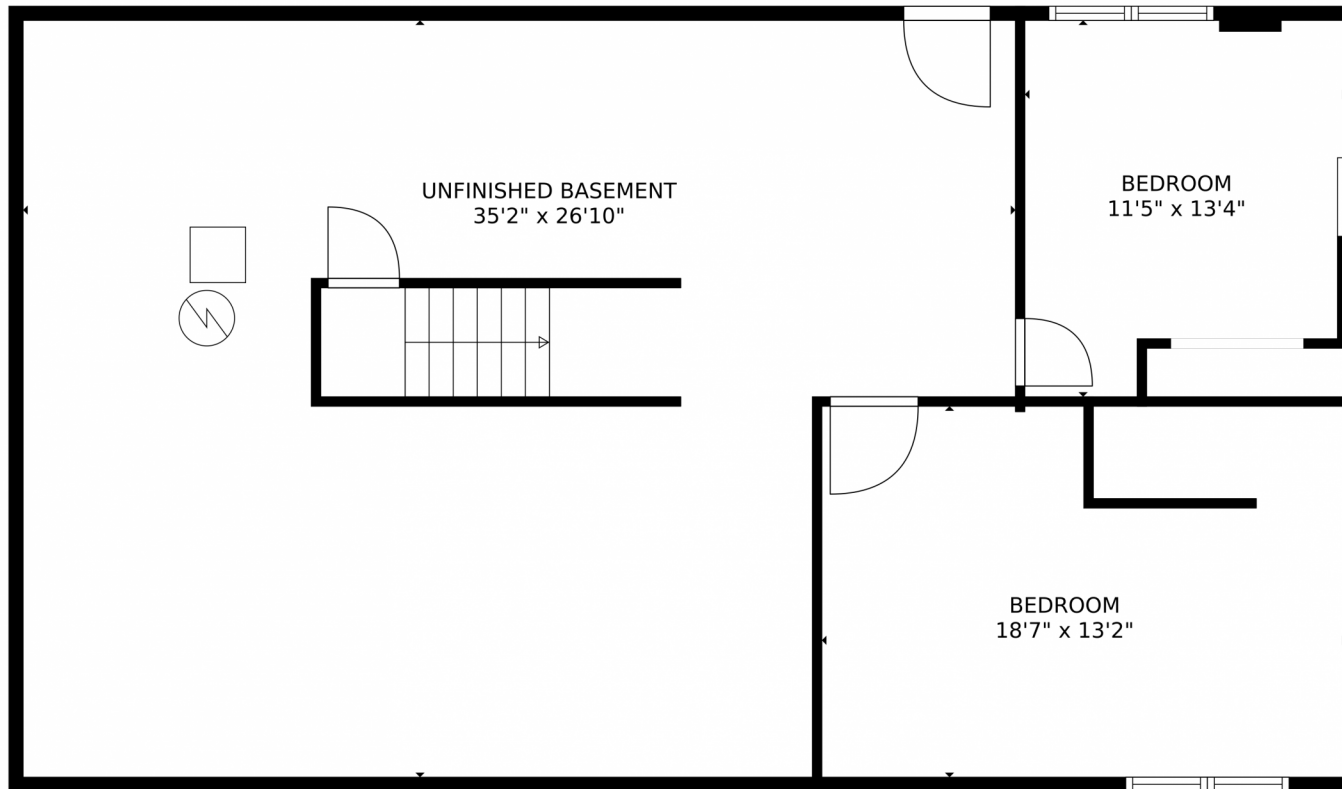
<https://thestorckteam.com>



Scan code  
for more  
property  
details



# 11159 Pine Meadows Drive, Kiowa, CO 80117 — Basement



**TOTAL: 2119 sq. ft**  
Below Ground: 413 sq. ft, FLOOR 2: 446 sq. ft, FLOOR 3: 1260 sq. ft  
EXCLUDED AREAS: UNFINISHED BASEMENT: 847 sq. ft, STORAGE: 50 sq. ft, SCREENED PORCH: 93 sq. ft,  
GARAGE: 641 sq. ft, PORCH: 293 sq. ft, DECK: 100 sq. ft  
MEASUREMENTS CALCULATED BY V1Photos.com ARE DEEMED HIGHLY RELIABLE BUT NOT GUARANTEED.

Disclaimer: Sizes and Dimensions are Approximate, Actual May Vary.



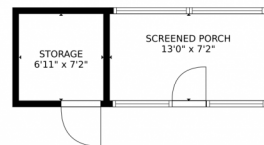
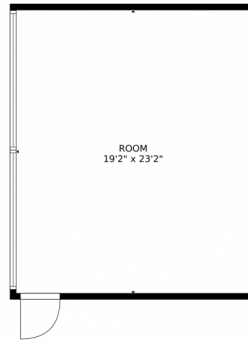
**Tatyana Sturm**  
720-350-5909  
tatyana@exitrealtydtc.com  
<https://thestorckteam.com>



Scan code  
for more  
property  
details



# 11159 Pine Meadows Drive, Kiowa, CO 80117 — Shed



**TOTAL: 2119 sq. ft**

Below Ground: 413 sq. ft, FLOOR 2: 446 sq. ft, FLOOR 3: 1260 sq. ft

EXCLUDED AREAS: UNFINISHED BASEMENT: 847 sq. ft, STORAGE: 50 sq. ft, SCREENED PORCH: 93 sq. ft,  
GARAGE: 641 sq. ft, PORCH: 293 sq. ft, DECK: 100 sq. ft

MEASUREMENTS CALCULATED BY V1Photos.com ARE DEEMED HIGHLY RELIABLE BUT NOT GUARANTEED.



Disclaimer: Sizes and Dimensions are Approximate, Actual May Vary.



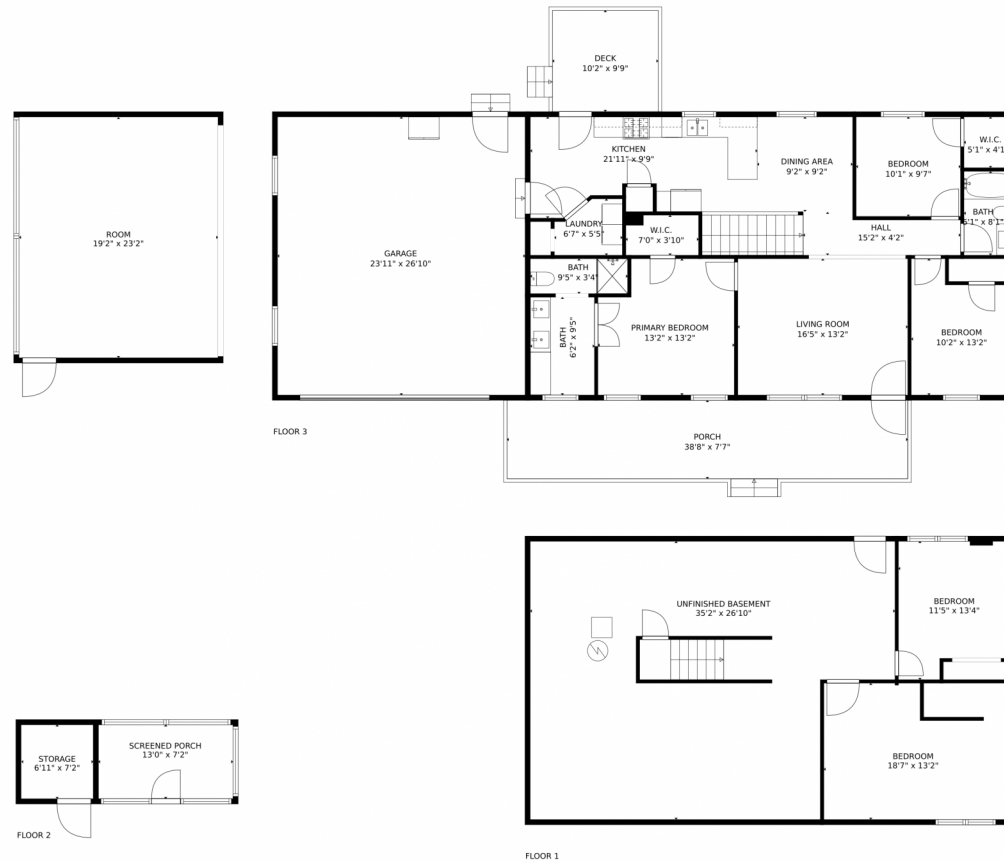
**Tatyana Sturm**  
720-350-5909  
tatyana@exitrealtydtc.com  
<https://thestorckteam.com>



Scan code  
for more  
property  
details



# 11159 Pine Meadows Drive, Kiowa, CO 80117 — All Levels



**TOTAL: 2119 sq. ft**

Below Ground: 413 sq. ft, FLOOR 2: 446 sq. ft, FLOOR 3: 1260 sq. ft

EXCLUDED AREAS: UNFINISHED BASEMENT: 847 sq. ft, STORAGE: 50 sq. ft, SCREENED PORCH: 93 sq. ft, GARAGE: 641 sq. ft, PORCH: 293 sq. ft, DECK: 100 sq. ft

MEASUREMENTS CALCULATED BY V1Photos.COM ARE DEEMED HIGHLY RELIABLE BUT NOT GUARANTEED.



Disclaimer: Sizes and Dimensions are Approximate, Actual May Vary.



**Tatyana Sturm**  
720-350-5909  
tatyana@exitrealttydtc.com  
<https://thestorckteam.com>



Scan code  
for more  
property  
details

