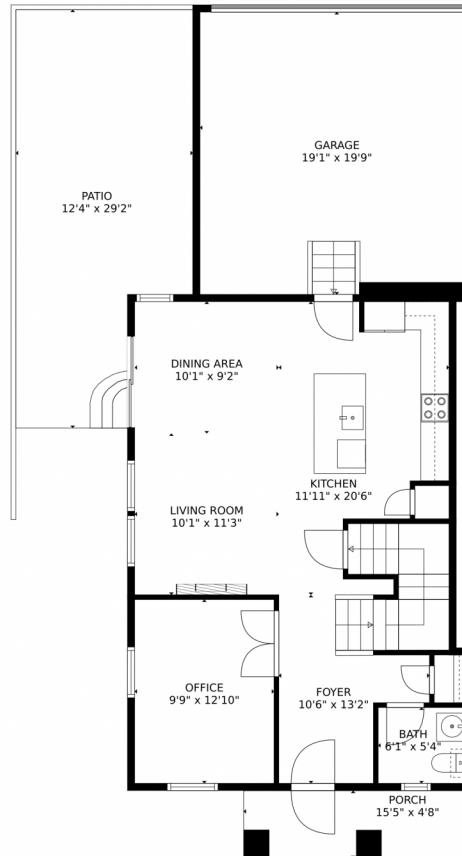


21918 East Radcliff Circle, Aurora, CO 80015 — Main Level



GROSS INTERNAL AREA
Below Ground: 0 sq. ft, FLOOR 2: 748 sq. ft, FLOOR 3: 1082 sq. ft
EXCLUDED AREAS: UNFINISHED BASEMENT: 720 sq. ft, GARAGE: 377 sq. ft, PORCH: 73 sq. ft,
PATIO: 318 sq. ft
TOTAL: 1830 sq. ft
MEASUREMENTS CALCULATED BY V1Photos.com ARE DEEMED HIGHLY RELIABLE BUT NOT GUARANTEED.



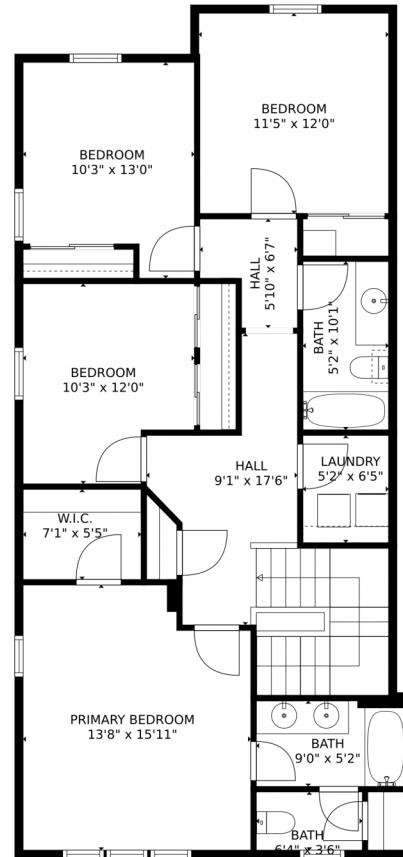
Disclaimer: Sizes and Dimensions are Approximate, Actual May Vary.



Greg Dach
303-525-9006
gregdach@remax.net



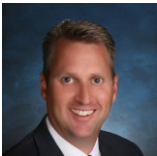
21918 East Radcliff Circle, Aurora, CO 80015 — Upper Level



GROSS INTERNAL AREA
Below Ground: 0 sq. ft, FLOOR 2: 748 sq. ft, FLOOR 3: 1082 sq. ft
EXCLUDED AREAS: UNFINISHED BASEMENT: 720 sq. ft, GARAGE: 377 sq. ft, PORCH: 73 sq. ft,
PATIO: 318 sq. ft
TOTAL: 1830 sq. ft
MEASUREMENTS CALCULATED BY V1Photos.com ARE DEEMED HIGHLY RELIABLE BUT NOT GUARANTEED.



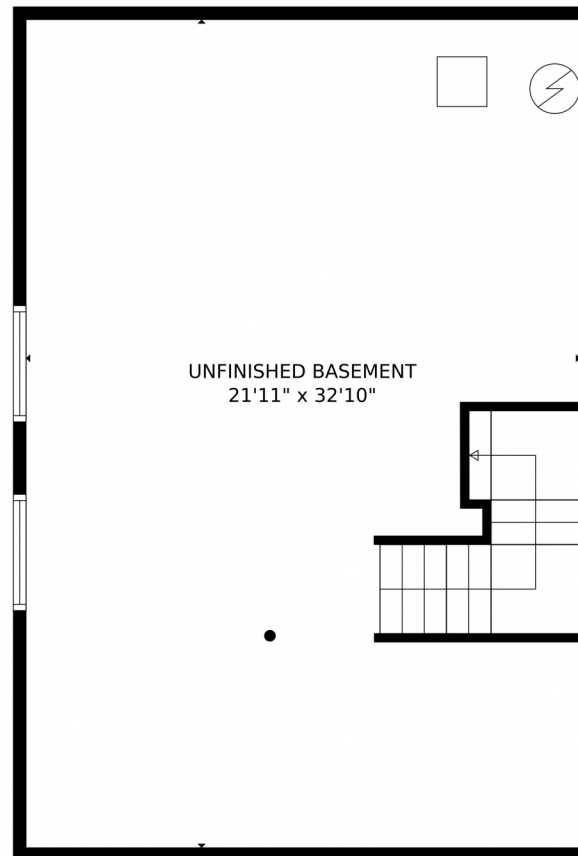
Disclaimer: Sizes and Dimensions are Approximate, Actual May Vary.



Greg Dach
303-525-9006
gregdach@remax.net



21918 East Radcliff Circle, Aurora, CO 80015 — Lower Level



GROSS INTERNAL AREA
Below Ground: 0 sq. ft, FLOOR 2: 748 sq. ft, FLOOR 3: 1082 sq. ft
EXCLUDED AREAS: UNFINISHED BASEMENT: 720 sq. ft, GARAGE: 377 sq. ft, PORCH: 73 sq. ft,
PATIO: 318 sq. ft
TOTAL: 1830 sq. ft
MEASUREMENTS CALCULATED BY V1Photos.com ARE DEEMED HIGHLY RELIABLE BUT NOT GUARANTEED.



Disclaimer: Sizes and Dimensions are Approximate, Actual May Vary.



Greg Dach
303-525-9006
gregdach@remax.net



Scan code
for more
property
details



21918 East Radcliff Circle, Aurora, CO 80015 — All Levels



GROSS INTERNAL AREA
Below Ground: 0 sq. ft, FLOOR 2: 748 sq. ft, FLOOR 3: 1082 sq. ft
EXCLUDED AREAS: UNFINISHED BASEMENT: 720 sq. ft, GARAGE: 377 sq. ft, PORCH: 73 sq. ft,
PATIO: 318 sq. ft
TOTAL: 1830 sq. ft
MEASUREMENTS CALCULATED BY V1Photos.COM ARE DEEMED HIGHLY RELIABLE BUT NOT GUARANTEED.



Disclaimer: Sizes and Dimensions are Approximate, Actual May Vary.



Greg Dach
303-525-9006
gregdach@remax.net



Scan code
for more
property
details

