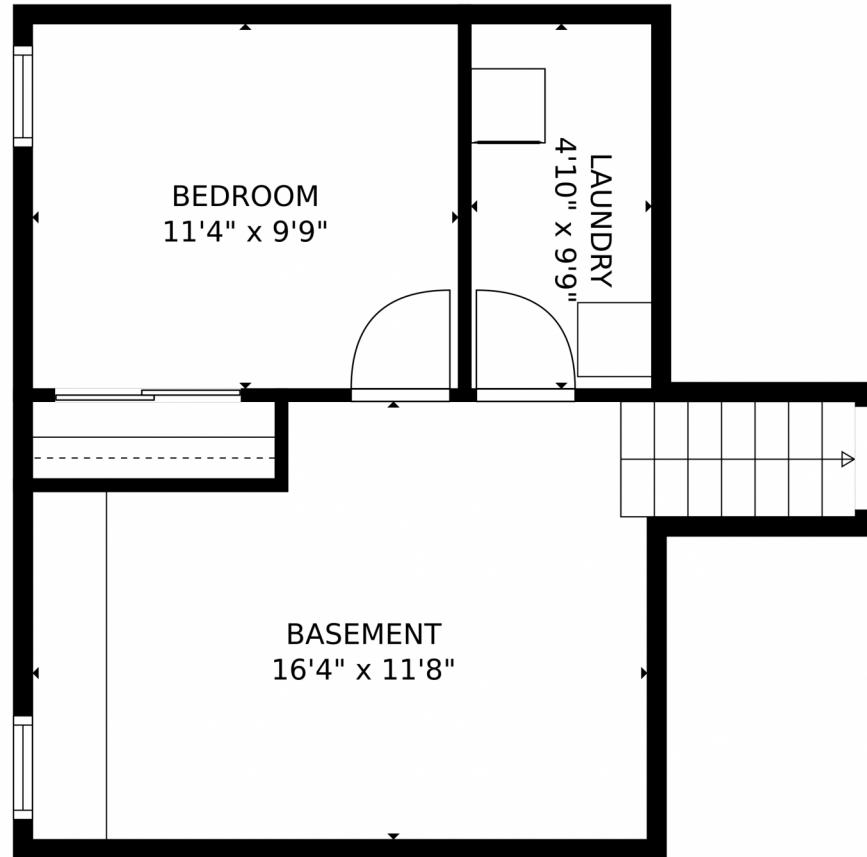


3682 South Mobile Way, Aurora, CO 80013 – Lower Level



GROSS INTERNAL AREA
Below Ground: 362 sq. ft. Below Ground: 417 sq. ft. FLOOR 3: 784 sq. ft. FLOOR 4: 417 sq. ft.
EXCLUDED AREAS: GARAGE: 414 sq. ft. PATIO: 211 sq. ft. PORCH: 115 sq. ft.
FIREPLACE: 8 sq. ft.
TOTAL: 1980 sq. ft.
MEASUREMENTS CALCULATED BY V1Photos.com ARE DEEMED HIGHLY RELIABLE BUT NOT GUARANTEED.

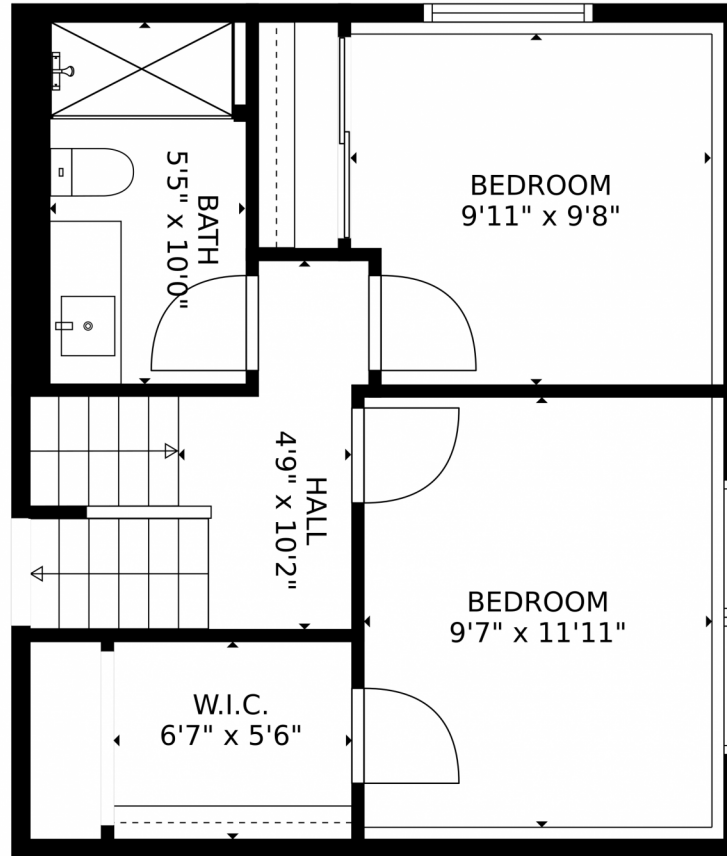


Disclaimer: Sizes and Dimensions are Approximate, Actual May Vary.



Taylor Haas
303-665-7368
taylorh@coloradorpm.com
<https://www.coloradorpm.com/available-rental-properties-denver>





GROSS INTERNAL AREA
Below Ground: 362 sq. ft. Below Ground: 417 sq. ft. FLOOR 3: 784 sq. ft. FLOOR 4: 417 sq. ft.
EXCLUDED AREAS: GARAGE: 414 sq. ft. PATIO: 211 sq. ft. PORCH: 115 sq. ft.
FIREPLACE: 8 sq. ft.
TOTAL: 1980 sq. ft.
MEASUREMENTS CALCULATED BY V1Photos.COM ARE DEEMED HIGHLY RELIABLE BUT NOT GUARANTEED.



Disclaimer: Sizes and Dimensions are Approximate, Actual May Vary.

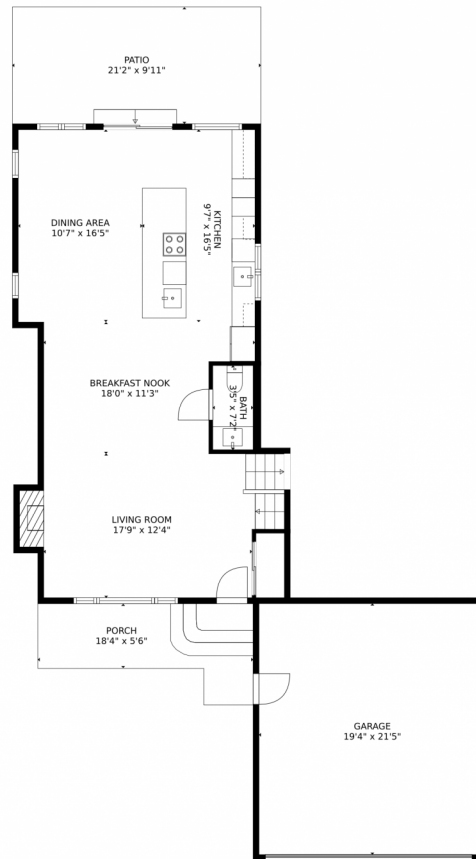


Taylor Haas
303-665-7368
taylorh@coloradorpm.com
<https://www.coloradorpm.com/available-rental-properties-denver>



Scan code
for more
property
details

3682 South Mobile Way, Aurora, CO 80013 – Main Level



GROSS INTERNAL AREA
Below Ground: 362 sq. ft. Below Ground: 417 sq. ft. FLOOR 3: 784 sq. ft. FLOOR 4: 417 sq. ft.
EXCLUDED AREAS: GARAGE: 414 sq. ft. PATIO: 211 sq. ft. PORCH: 115 sq. ft.
FIREPLACE: 8 sq. ft.
TOTAL: 1980 sq. ft.
MEASUREMENTS CALCULATED BY V1Photos.com ARE DEEMED HIGHLY RELIABLE BUT NOT GUARANTEED.

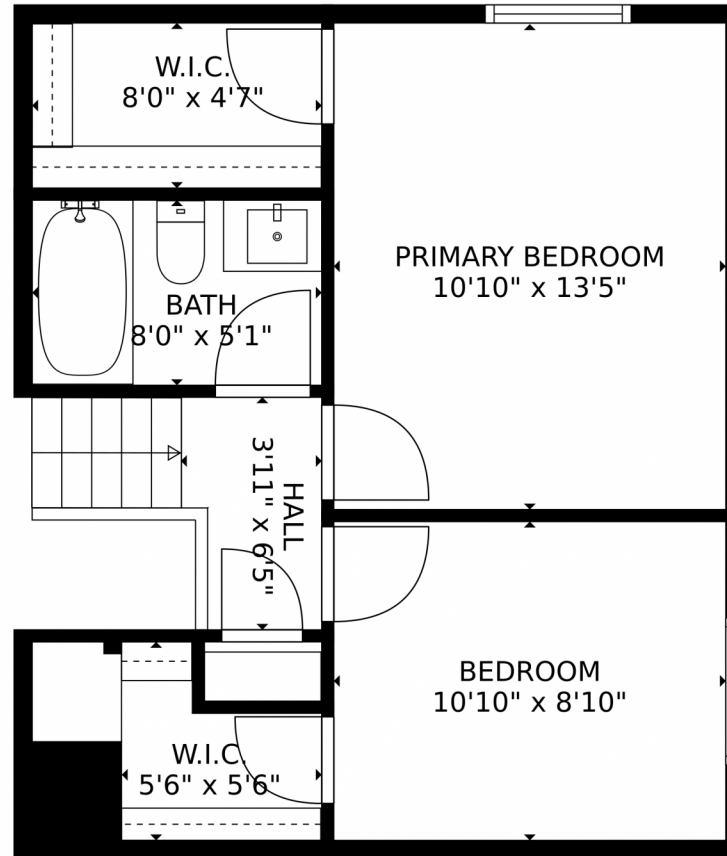


Disclaimer: Sizes and Dimensions are Approximate, Actual May Vary.



Taylor Haas
303-665-7368
taylorh@coloradorpm.com
<https://www.coloradorpm.com/available-rental-properties-denver>





GROSS INTERNAL AREA
Below Ground: 362 sq. ft. Below Ground: 417 sq. ft. FLOOR 3: 784 sq. ft. FLOOR 4: 417 sq. ft.
EXCLUDED AREAS: GARAGE: 414 sq. ft. PATIO: 211 sq. ft. PORCH: 115 sq. ft.
FIREPLACE: 8 sq. ft.
TOTAL: 1980 sq. ft.
MEASUREMENTS CALCULATED BY V1Photos.com ARE DEEMED HIGHLY RELIABLE BUT NOT GUARANTEED.



Disclaimer: Sizes and Dimensions are Approximate, Actual May Vary.



Taylor Haas

303-665-7368

taylorh@coloradorpm.com

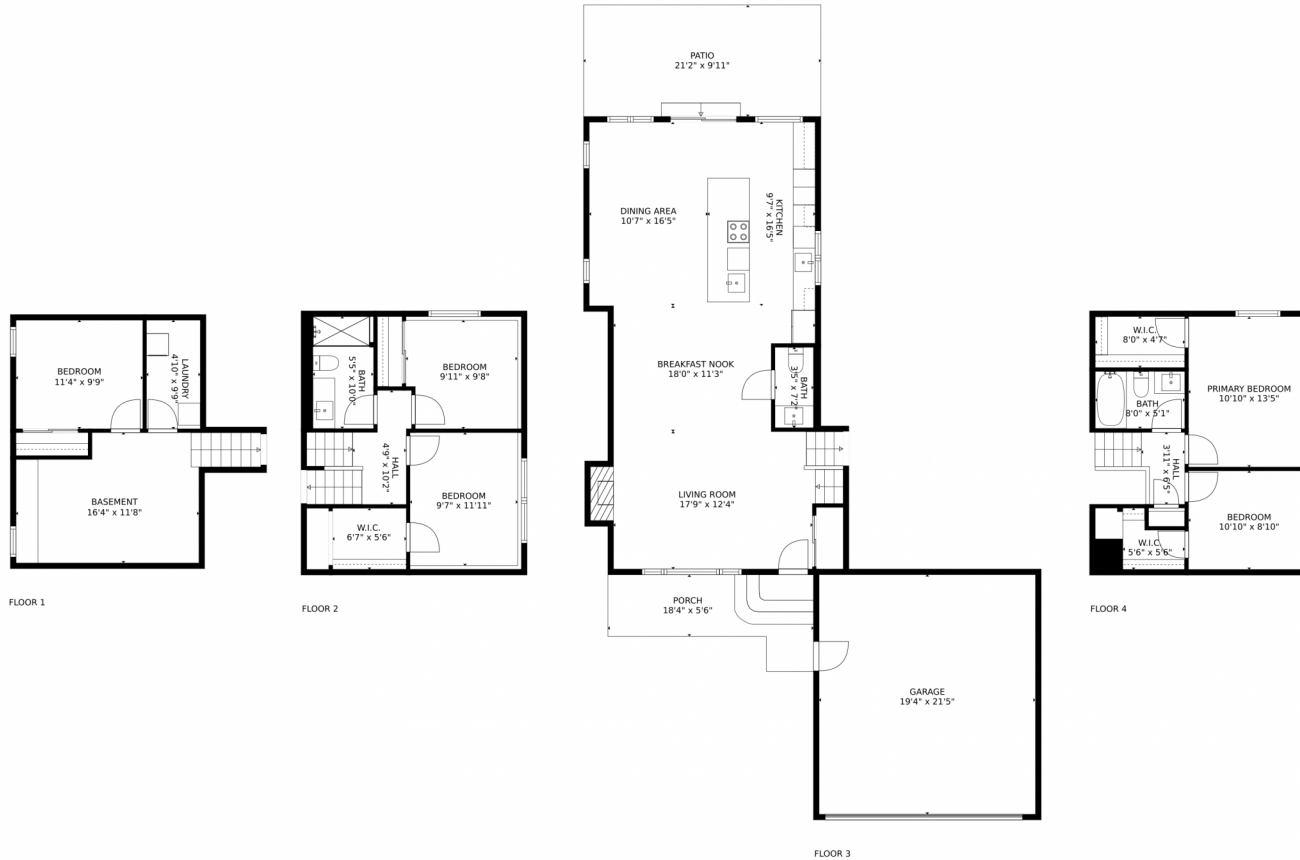
<https://www.coloradorpm.com/available-rental-properties-denver>



Scan code
for more
property
details



3682 South Mobile Way, Aurora, CO 80013 – All Levels



GROSS INTERNAL AREA
Below Ground: 362 sq. ft. Below Ground: 417 sq. ft. FLOOR 3: 784 sq. ft. FLOOR 4: 417 sq. ft.
EXCLUDED AREAS: GARAGE: 414 sq. ft. PATIO: 211 sq. ft. PORCH: 115 sq. ft.
FIREPLACE: 8 sq. ft.
TOTAL: 1980 sq. ft.
MEASUREMENTS CALCULATED BY V1Photos.com ARE DEEMED HIGHLY RELIABLE BUT NOT GUARANTEED.



Disclaimer: Sizes and Dimensions are Approximate, Actual May Vary.



Taylor Haas

303-665-7368

taylorh@coloradorpm.com

<https://www.coloradorpm.com/available-rental-properties-denver>



Scan code
for more
property
details

