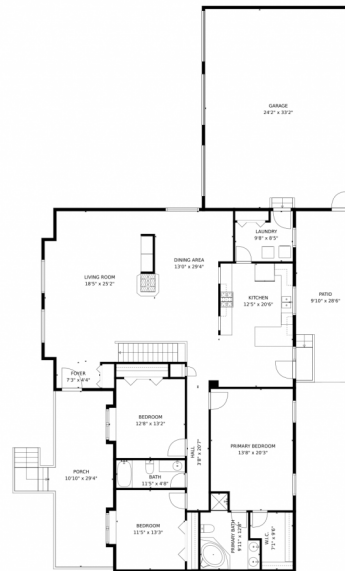
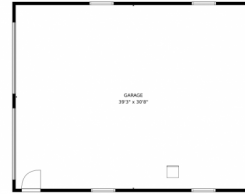


18553 County Road 5, Berthoud, CO 80513 — Main Level



GROSS INTERNAL AREA
Below Ground: 1020 sq. ft, FLOOR 2: 2105 sq. ft
EXCLUDED AREAS: ELECTRICAL ROOM: 102 sq. ft, PATIO: 1020 sq. ft, GARAGE: 2017 sq. ft,
PORCH: 271 sq. ft
TOTAL: 3125 sq. ft
MEASUREMENTS CALCULATED BY V1Photos.com ARE DEEMED HIGHLY RELIABLE BUT NOT GUARANTEED.



Disclaimer: Sizes and Dimensions are Approximate, Actual May Vary.



Jorge Armstrong

720-233-7091

jorge.armstrong@kw.com

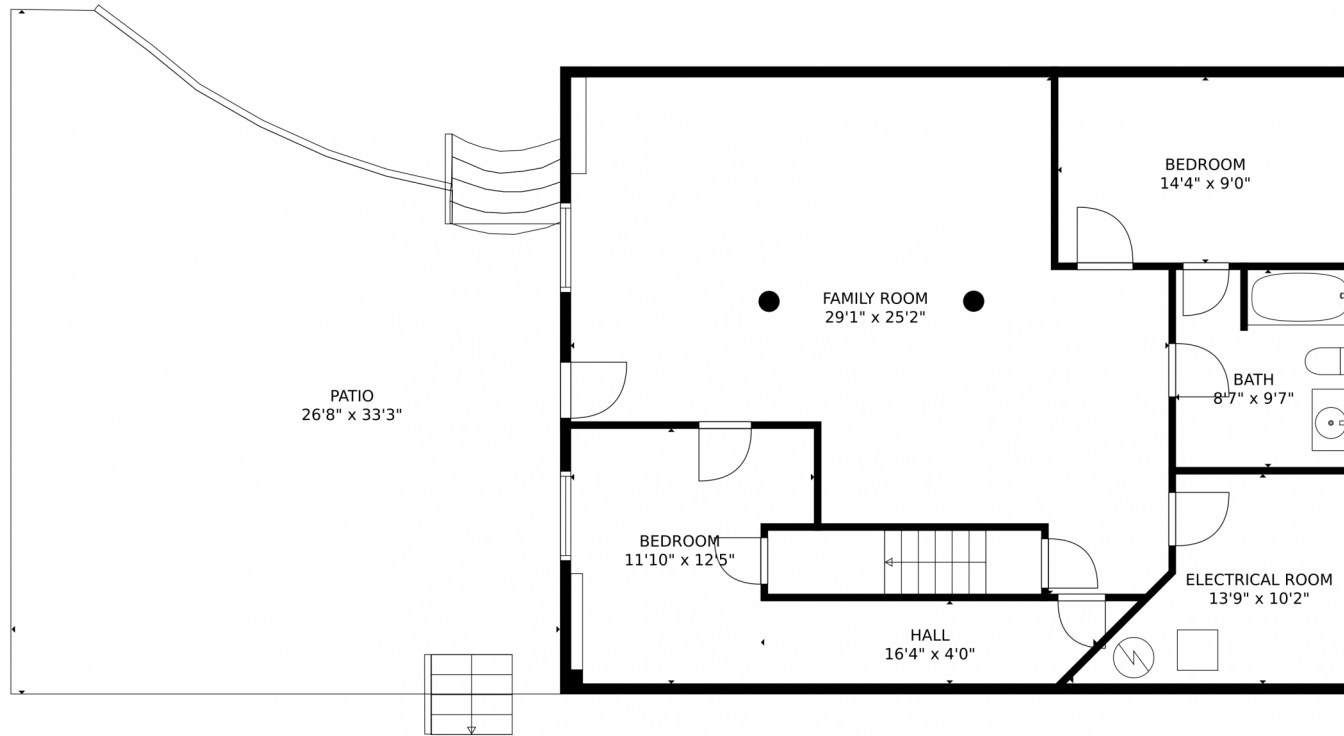
<https://www.milehighcityliving.com/>



Scan code
for more
property
details



18553 County Road 5, Berthoud, CO 80513 — Lower Level



GROSS INTERNAL AREA
Below Ground: 1020 sq. ft, FLOOR 2: 2105 sq. ft
EXCLUDED AREAS: ELECTRICAL ROOM: 102 sq. ft, PATIO: 1020 sq. ft, GARAGE: 2017 sq. ft,
PORCH: 271 sq. ft
TOTAL: 3125 sq. ft
MEASUREMENTS CALCULATED BY V1Photos.com ARE DEEMED HIGHLY RELIABLE BUT NOT GUARANTEED.



Disclaimer: Sizes and Dimensions are Approximate, Actual May Vary.



Jorge Armstrong

720-233-7091

jorge.armstrong@kw.com

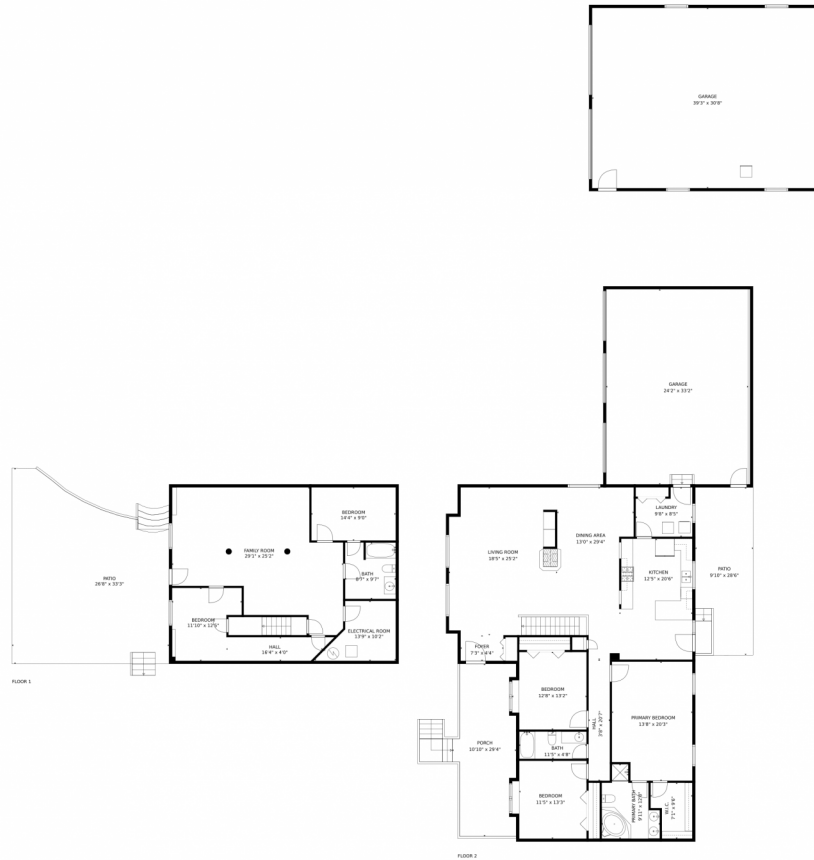
<https://www.milehighcityliving.com/>



Scan code
for more
property
details



18553 County Road 5, Berthoud, CO 80513 — All Levels



GROSS INTERNAL AREA
Below Ground: 1020 sq. ft, FLOOR 2: 2105 sq. ft
EXCLUDED AREAS: ELECTRICAL ROOM: 102 sq. ft, PATIO: 1020 sq. ft, GARAGE: 2017 sq. ft,
PORCH: 271 sq. ft
TOTAL: 3125 sq. ft
MEASUREMENTS CALCULATED BY V1PHOTOS.COM ARE DEEMED HIGHLY RELIABLE BUT NOT GUARANTEED.



Disclaimer: Sizes and Dimensions are Approximate, Actual May Vary.



Jorge Armstrong
720-233-7091
jorge.armstrong@kw.com
<https://www.milehighcityliving.com/>



Scan code
for more
property
details

