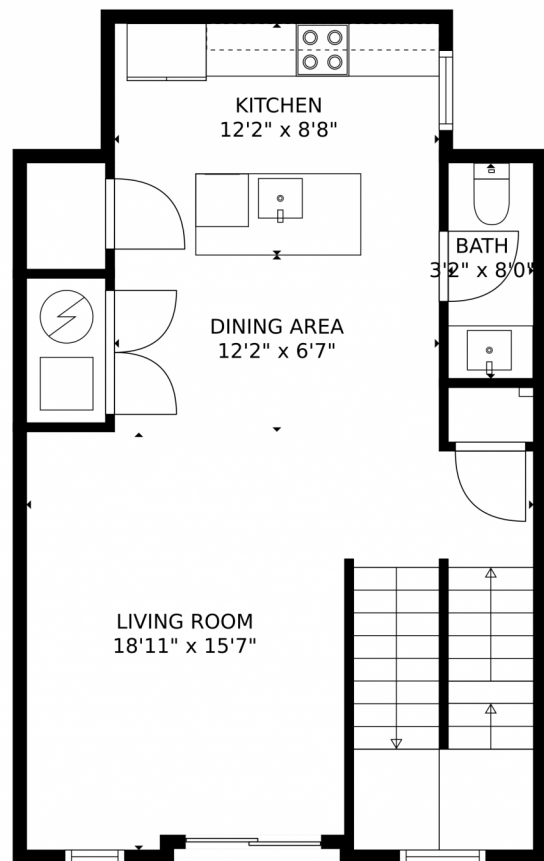


## 3505 South Marion Street #C, Englewood, CO 80113 — Main Level



GROSS INTERNAL AREA  
FLOOR 1: 78 sq. ft, FLOOR 2: 525 sq. ft, Below Ground: 545 sq. ft, FLOOR 4: 115 sq. ft  
EXCLUDED AREAS: UNDEFINED: 35 sq. ft, GARAGE: 373 sq. ft, TERRACE: 431 sq. ft  
TOTAL: 1263 sq. ft  
MEASUREMENTS CALCULATED BY V1Photos.com ARE DEEMED HIGHLY RELIABLE BUT NOT GUARANTEED.



Disclaimer: Sizes and Dimensions are Approximate, Actual May Vary.



**Taylor Haas**

303-665-7368

taylorh@coloradorpm.com

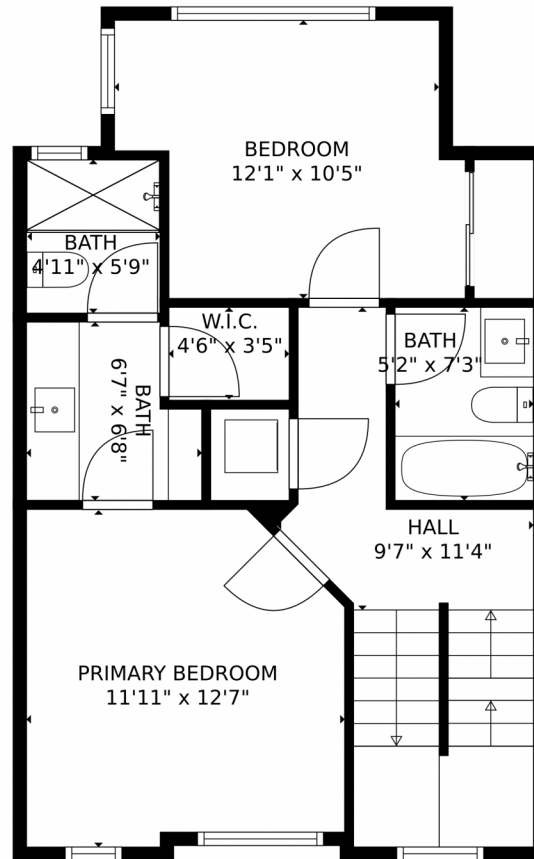
<https://www.coloradorpm.com/available-rental-properties-denver>



Scan code  
for more  
property  
details



## 3505 South Marion Street #C, Englewood, CO 80113 — Upper Level



GROSS INTERNAL AREA  
FLOOR 1: 78 sq. ft, FLOOR 2: 525 sq. ft, Below Ground: 545 sq. ft, FLOOR 4: 115 sq. ft  
EXCLUDED AREAS: UNDEFINED: 35 sq. ft, GARAGE: 373 sq. ft, TERRACE: 431 sq. ft  
TOTAL: 1263 sq. ft  
MEASUREMENTS CALCULATED BY V1Photos.com ARE DEEMED HIGHLY RELIABLE BUT NOT GUARANTEED.



Disclaimer: Sizes and Dimensions are Approximate, Actual May Vary.



**Taylor Haas**

303-665-7368

taylorh@coloradorpm.com

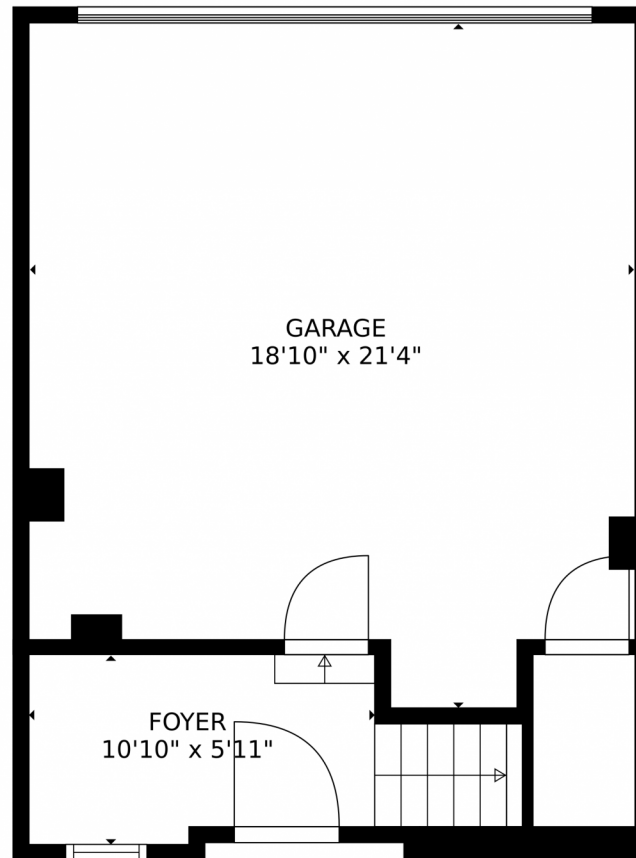
<https://www.coloradorpm.com/available-rental-properties-denver>



Scan code  
for more  
property  
details



## 3505 South Marion Street #C, Englewood, CO 80113 — Lower Level



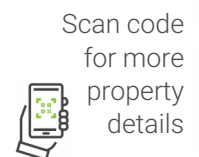
GROSS INTERNAL AREA  
FLOOR 1: 78 sq. ft, FLOOR 2: 525 sq. ft, Below Ground: 545 sq. ft, FLOOR 4: 115 sq. ft  
EXCLUDED AREAS: UNDEFINED: 35 sq. ft, GARAGE: 373 sq. ft, TERRACE: 431 sq. ft  
TOTAL: 1263 sq. ft  
MEASUREMENTS CALCULATED BY V1Photos.com ARE DEEMED HIGHLY RELIABLE BUT NOT GUARANTEED.



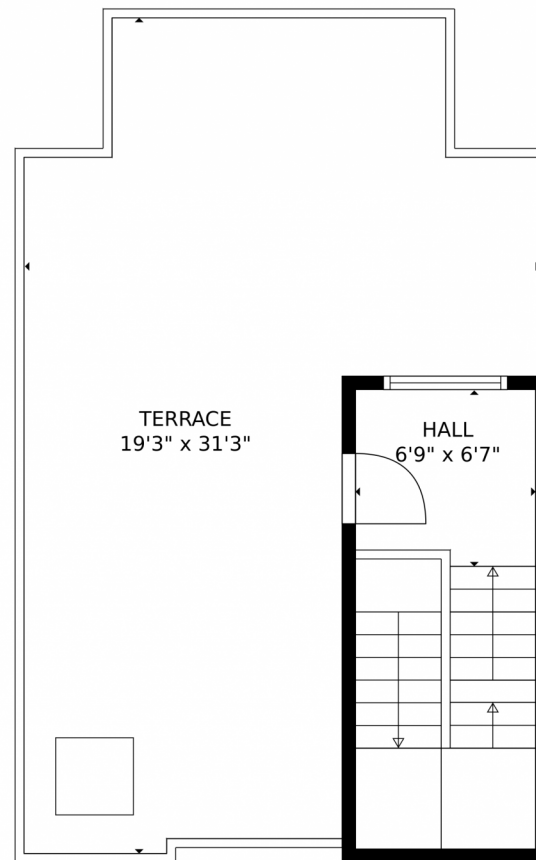
Disclaimer: Sizes and Dimensions are Approximate, Actual May Vary.



**Taylor Haas**  
303-665-7368  
taylorh@coloradorpm.com  
<https://www.coloradorpm.com/available-rental-properties-denver>



## 3505 South Marion Street #C, Englewood, CO 80113 — Roof Top



GROSS INTERNAL AREA  
FLOOR 1: 78 sq. ft, FLOOR 2: 525 sq. ft, Below Ground: 545 sq. ft, FLOOR 4: 115 sq. ft  
EXCLUDED AREAS: UNDEFINED: 35 sq. ft, GARAGE: 373 sq. ft, TERRACE: 431 sq. ft  
TOTAL: 1263 sq. ft  
MEASUREMENTS CALCULATED BY V1Photos.com ARE DEEMED HIGHLY RELIABLE BUT NOT GUARANTEED.



Disclaimer: Sizes and Dimensions are Approximate, Actual May Vary.



**Taylor Haas**

303-665-7368

taylorh@coloradorpm.com

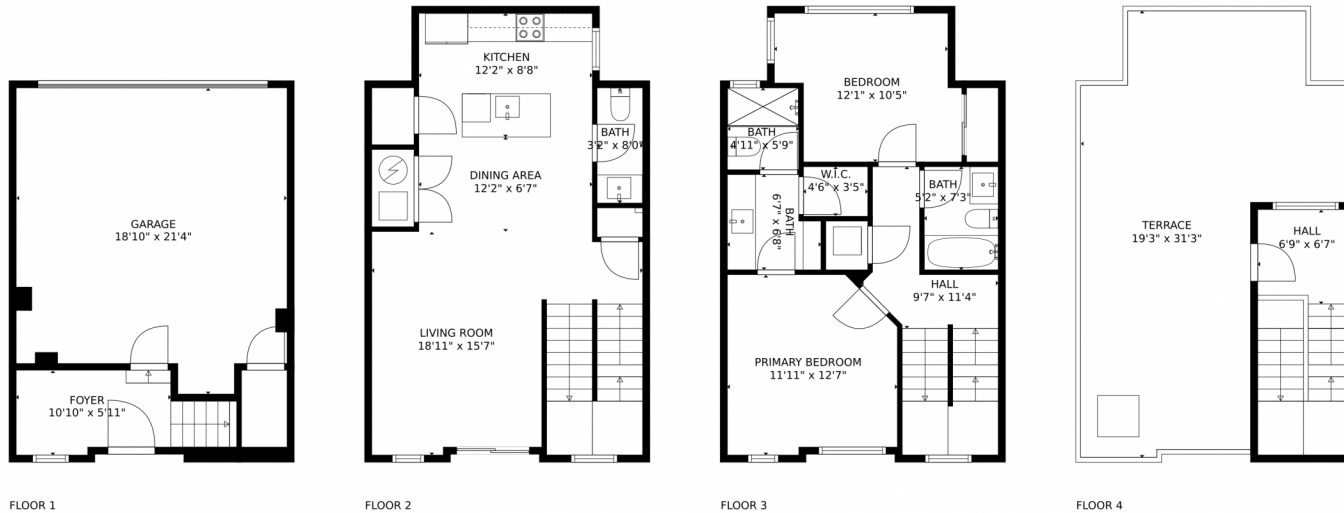
<https://www.coloradorpm.com/available-rental-properties-denver>



Scan code  
for more  
property  
details



# 3505 South Marion Street #C, Englewood, CO 80113 — All Levels



GROSS INTERNAL AREA  
FLOOR 1: 78 sq. ft, FLOOR 2: 525 sq. ft, Below Ground: 545 sq. ft, FLOOR 4: 115 sq. ft  
EXCLUDED AREAS: UNDEFINED: 35 sq. ft, GARAGE: 373 sq. ft, TERRACE: 431 sq. ft  
TOTAL: 1263 sq. ft  
MEASUREMENTS CALCULATED BY V1Photos.com ARE DEEMED HIGHLY RELIABLE BUT NOT GUARANTEED.



Disclaimer: Sizes and Dimensions are Approximate, Actual May Vary.



**Taylor Haas**

303-665-7368

taylorh@coloradorpm.com

<https://www.coloradorpm.com/available-rental-properties-denver>



Scan code  
for more  
property  
details

