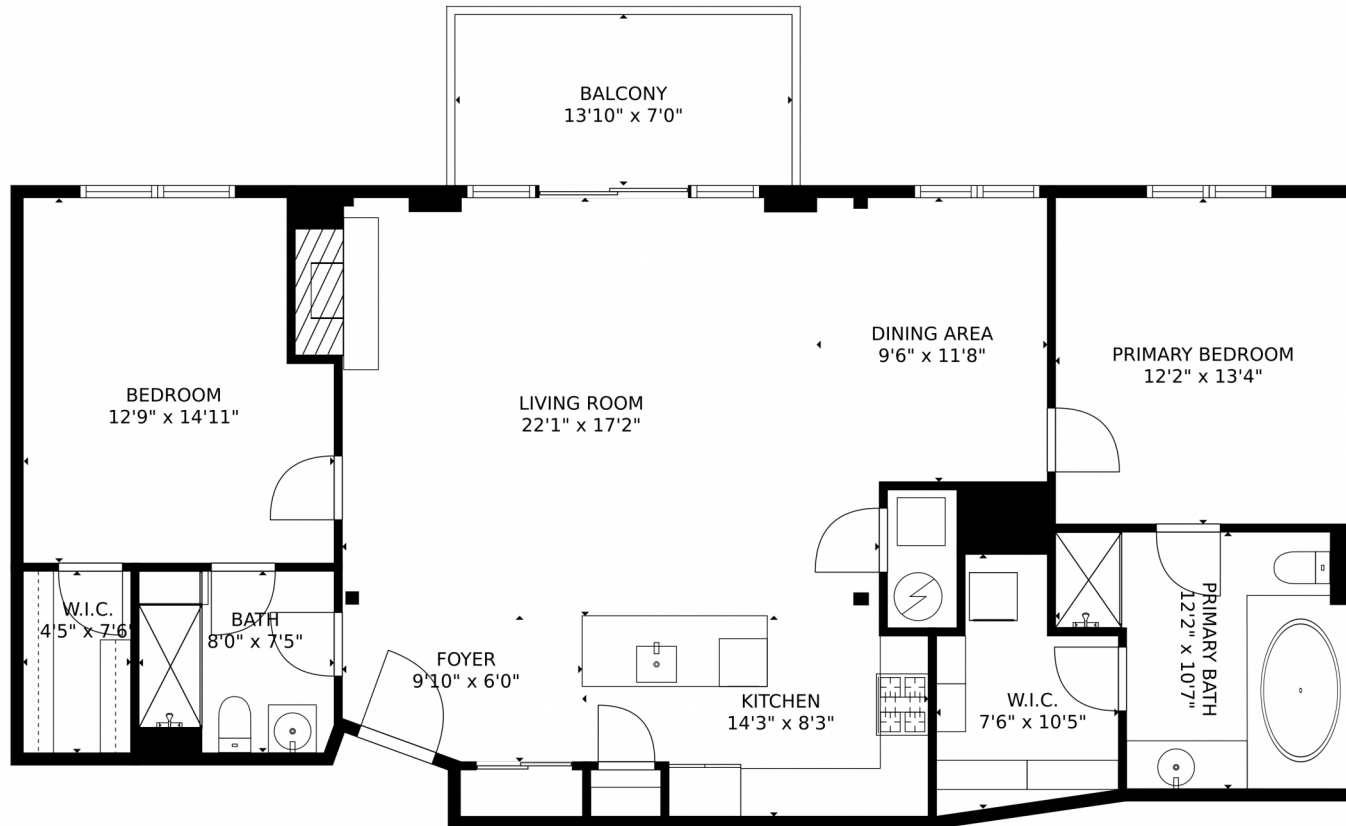


1435 Wazee Street, Denver, CO 80202 – Main Level



GROSS INTERNAL AREA
FLOOR 1: 1198 sq. ft.
EXCLUDED AREAS: UNDEFINED: 27 sq. ft, W.I.C.: 63 sq. ft, BALCONY: 97 sq. ft
TOTAL: 1198 sq. ft
MEASUREMENTS CALCULATED BY V1Photos.com ARE DEEMED HIGHLY RELIABLE BUT NOT GUARANTEED.



Disclaimer: Sizes and Dimensions are Approximate, Actual May Vary.



Taylor Haas

303-665-7368

taylorh@coloradorpm.com

<https://www.coloradorpm.com/available-rental-properties-denver>



Scan code
for more
property
details

