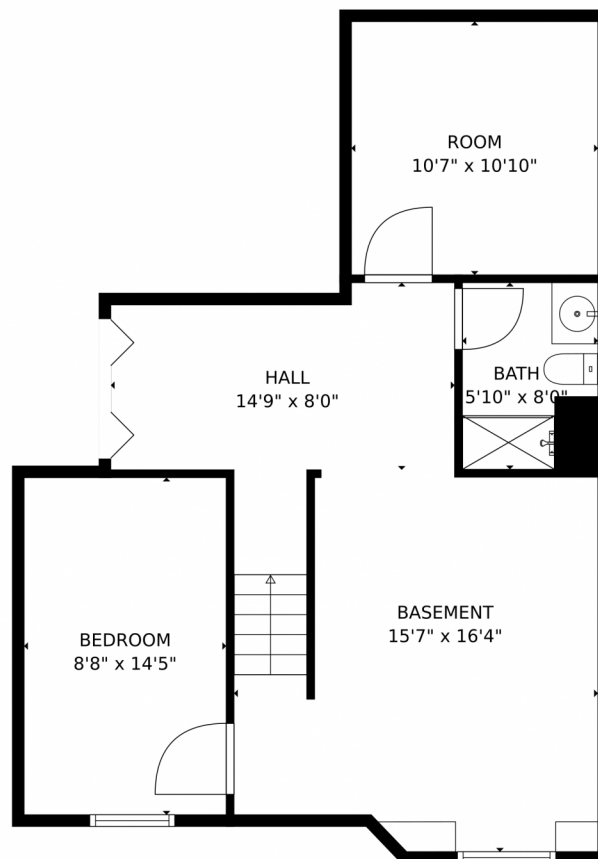


## 2070 South Xenia Way, Denver, CO 80231 — Lower Level



GROSS INTERNAL AREA  
Below Ground: 522 sq. ft. FLOOR 2: 707 sq. ft. FLOOR 3: 704 sq. ft.  
EXCLUDED AREAS: ROOM: 115 sq. ft. DECK: 81 sq. ft. GARAGE: 355 sq. ft.  
FIREPLACE: 1 sq. ft. OPEN TO BELOW: 219 sq. ft.  
TOTAL: 1933 sq. ft.  
MEASUREMENTS CALCULATED BY V1Photos.com ARE DEEMED HIGHLY RELIABLE BUT NOT GUARANTEED.



Disclaimer: Sizes and Dimensions are Approximate, Actual May Vary.



**Taylor Haas**

303-665-7368

taylorh@coloradorpm.com

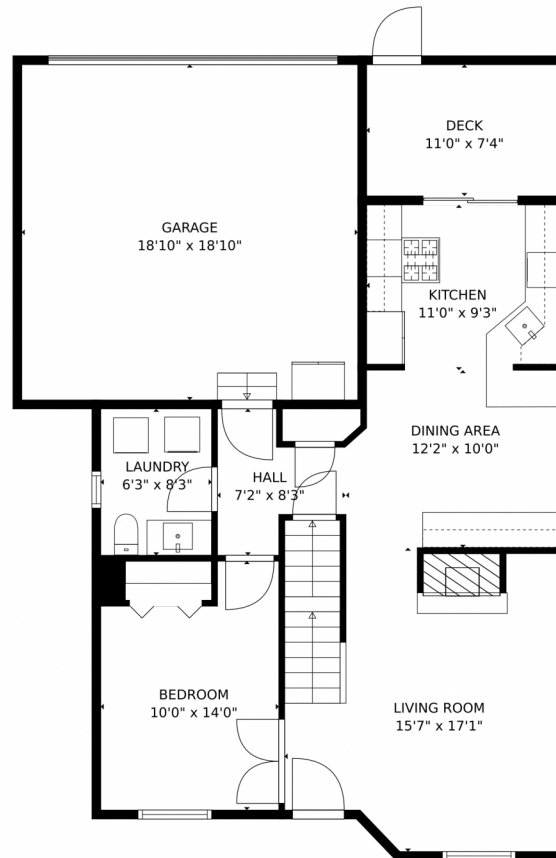
<https://www.coloradorpm.com/available-rental-properties-denver>



Scan code  
for more  
property  
details



## 2070 South Xenia Way, Denver, CO 80231 — Main Level



GROSS INTERNAL AREA  
Below Ground: 522 sq. ft, FLOOR 2: 707 sq. ft, FLOOR 3: 704 sq. ft  
EXCLUDED AREAS: ROOM: 115 sq. ft, DECK: 81 sq. ft, GARAGE: 355 sq. ft,  
FIREPLACE: 1 sq. ft, OPEN TO BELOW: 219 sq. ft  
TOTAL: 1933 sq. ft  
MEASUREMENTS CALCULATED BY V1Photos.com ARE DEEMED HIGHLY RELIABLE BUT NOT GUARANTEED.



Disclaimer: Sizes and Dimensions are Approximate, Actual May Vary.



**Taylor Haas**

303-665-7368

taylorh@coloradorpm.com

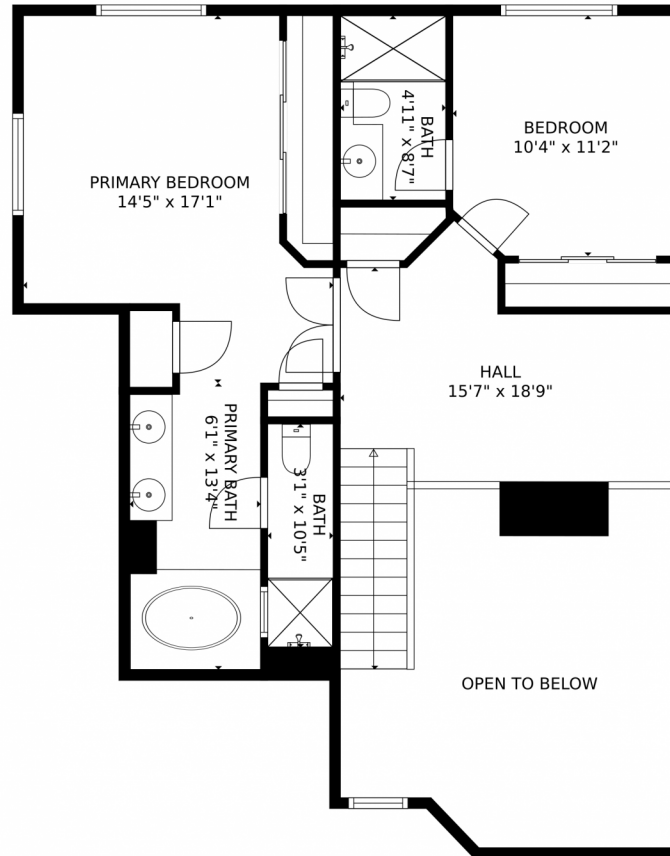
<https://www.coloradorpm.com/available-rental-properties-denver>



Scan code  
for more  
property  
details



## 2070 South Xenia Way, Denver, CO 80231 — Second Level



GROSS INTERNAL AREA  
Below Ground: 522 sq. ft, FLOOR 2: 707 sq. ft, FLOOR 3: 704 sq. ft  
EXCLUDED AREAS: ROOM: 115 sq. ft, DECK: 81 sq. ft, GARAGE: 355 sq. ft,  
FIREPLACE: 1 sq. ft, OPEN TO BELOW: 219 sq. ft  
TOTAL: 1933 sq. ft  
MEASUREMENTS CALCULATED BY V1Photos.com ARE DEEMED HIGHLY RELIABLE BUT NOT GUARANTEED.



Disclaimer: Sizes and Dimensions are Approximate, Actual May Vary.



**Taylor Haas**

303-665-7368

taylorh@coloradorm.com

<https://www.coloradorm.com/available-rental-properties-denver>



Scan code  
for more  
property  
details



## 2070 South Xenia Way, Denver, CO 80231 — All Levels



GROSS INTERNAL AREA  
Below Ground: 522 sq. ft, FLOOR 2: 707 sq. ft, FLOOR 3: 704 sq. ft  
EXCLUDED AREAS: ROOM: 115 sq. ft, DECK: 81 sq. ft, GARAGE: 355 sq. ft,  
FIREPLACE: 1 sq. ft, OPEN TO BELOW: 219 sq. ft  
TOTAL: 1933 sq. ft  
MEASUREMENTS CALCULATED BY V1Photos.com ARE DEEMED HIGHLY RELIABLE BUT NOT GUARANTEED.



Disclaimer: Sizes and Dimensions are Approximate, Actual May Vary.



**Taylor Haas**

303-665-7368

taylorh@coloradorpm.com

<https://www.coloradorpm.com/available-rental-properties-denver>



Scan code  
for more  
property  
details

