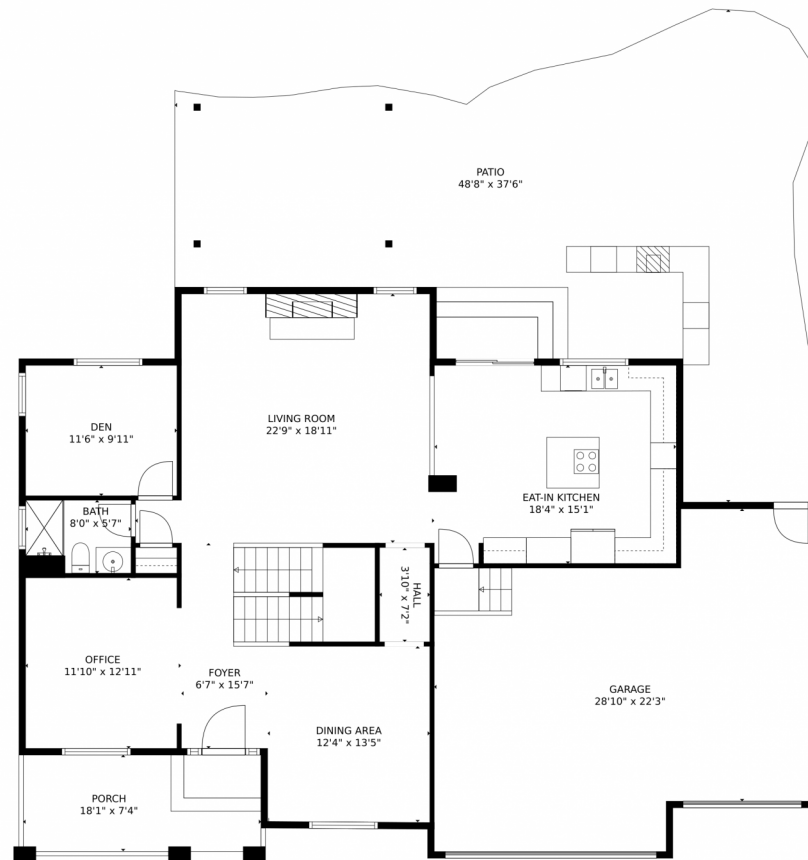


## 2090 Bellvista Street, Castle Rock, CO 80109 — Main Level



GROSS INTERNAL AREA  
Below Ground: 823 sq. ft, FLOOR 2: 1352 sq. ft, FLOOR 3: 1358 sq. ft  
EXCLUDED AREAS: STORAGE: 50 sq. ft, ELECTRICAL ROOM: 77 sq. ft, UNDEFINED: 10 sq. ft,  
GARAGE: 632 sq. ft, PORCH: 133 sq. ft, PATIO: 1064 sq. ft,  
OPEN TO BELOW: 255 sq. ft  
TOTAL: 3533 sq. ft  
MEASUREMENTS CALCULATED BY V1Photos.com ARE DEEMED HIGHLY RELIABLE BUT NOT GUARANTEED.



Disclaimer: Sizes and Dimensions are Approximate, Actual May Vary.



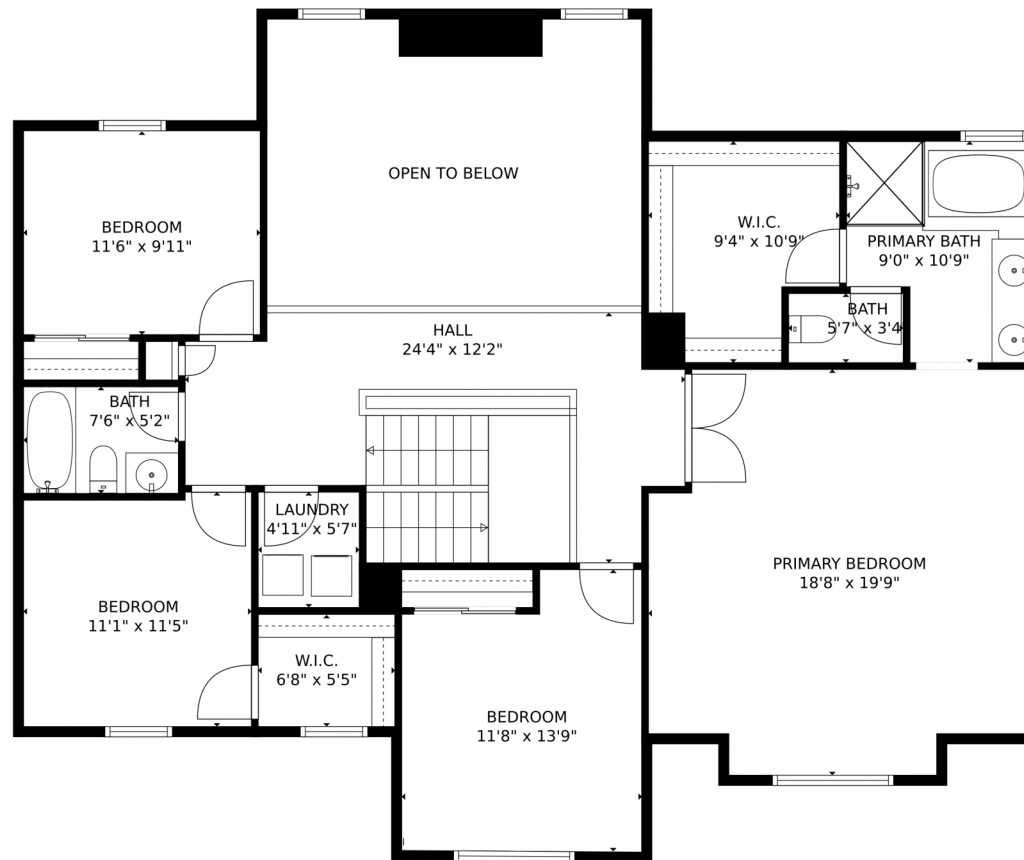
**Arthur Belefonte**  
303-829-7300  
arthur@belefontebrokers.com  
<https://belefontebrokers.com>



Scan code  
for more  
property  
details



## 2090 Bellvista Street, Castle Rock, CO 80109 – Upper Level



GROSS INTERNAL AREA  
Below Ground: 823 sq. ft, FLOOR 2: 1352 sq. ft, FLOOR 3: 1358 sq. ft  
EXCLUDED AREAS: STORAGE: 50 sq. ft, ELECTRICAL ROOM: 77 sq. ft, UNDEFINED: 10 sq. ft,  
GARAGE: 632 sq. ft, PORCH: 133 sq. ft, PATIO: 1064 sq. ft,  
OPEN TO BELOW: 255 sq. ft  
TOTAL: 3533 sq. ft  
MEASUREMENTS CALCULATED BY V1Photos.com ARE DEEMED HIGHLY RELIABLE BUT NOT GUARANTEED.



Disclaimer: Sizes and Dimensions are Approximate, Actual May Vary.



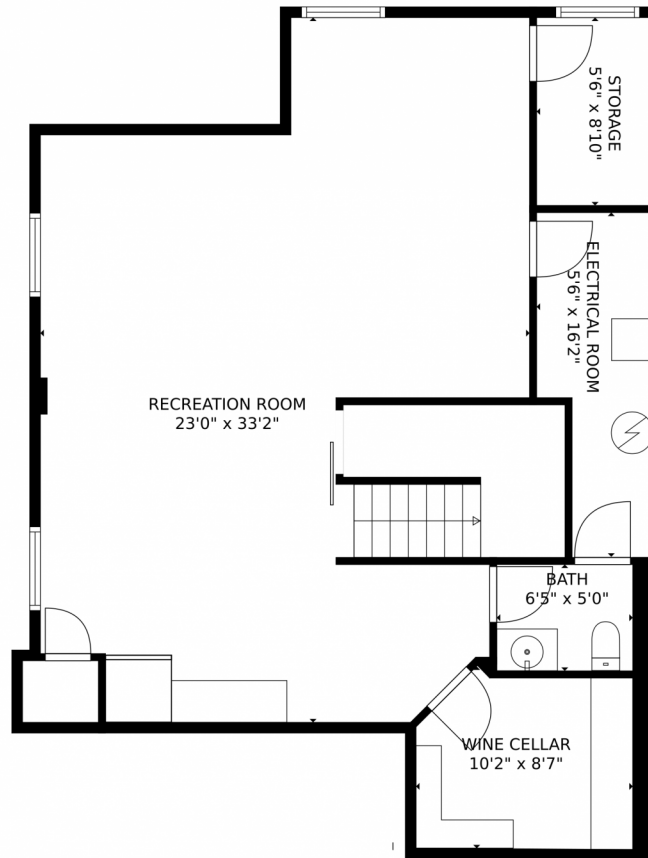
**Arthur Belefonte**  
303-829-7300  
arthur@belefontebrokers.com  
<https://belefontebrokers.com>



Scan code  
for more  
property  
details



## 2090 Bellvista Street, Castle Rock, CO 80109 — Lower Level



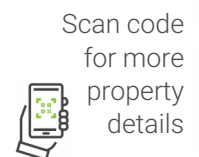
GROSS INTERNAL AREA  
Below Ground: 823 sq. ft, FLOOR 2: 1352 sq. ft, FLOOR 3: 1358 sq. ft  
EXCLUDED AREAS: STORAGE: 50 sq. ft, ELECTRICAL ROOM: 77 sq. ft, UNDEFINED: 10 sq. ft,  
GARAGE: 632 sq. ft, PORCH: 133 sq. ft, PATIO: 1064 sq. ft,  
OPEN TO BELOW: 255 sq. ft  
TOTAL: 3533 sq. ft  
MEASUREMENTS CALCULATED BY V1Photos.com ARE DEEMED HIGHLY RELIABLE BUT NOT GUARANTEED.



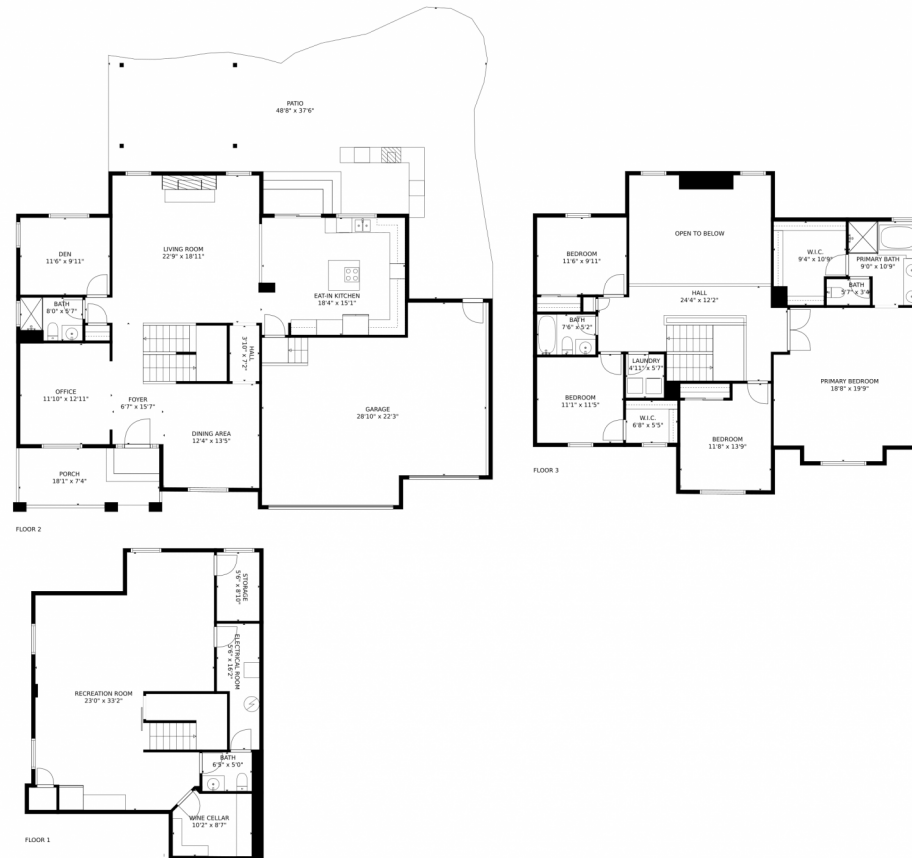
Disclaimer: Sizes and Dimensions are Approximate, Actual May Vary.



**Arthur Belefonte**  
303-829-7300  
[arthur@belefontebrokers.com](mailto:arthur@belefontebrokers.com)  
<https://belefontebrokers.com>



# 2090 Bellvista Street, Castle Rock, CO 80109 – All Levels



GROSS INTERNAL AREA  
 Below Ground: 823 sq. ft, FLOOR 2: 1352 sq. ft, FLOOR 3: 1358 sq. ft  
 EXCLUDED AREAS: STORAGE: 50 sq. ft, ELECTRICAL ROOM: 77 sq. ft, UNDEFINED: 10 sq. ft,  
 GARAGE: 632 sq. ft, PORCH: 133 sq. ft, PATIO: 1064 sq. ft,  
 OPEN TO BELOW: 255 sq. ft  
 TOTAL: 3533 sq. ft  
 MEASUREMENTS CALCULATED BY V1Photos.com ARE DEEMED HIGHLY RELIABLE BUT NOT GUARANTEED.



Disclaimer: Sizes and Dimensions are Approximate, Actual May Vary.



**Arthur Belefonte**  
 303-829-7300  
[arthur@belefontebrokers.com](mailto:arthur@belefontebrokers.com)  
<https://belefontebrokers.com>

