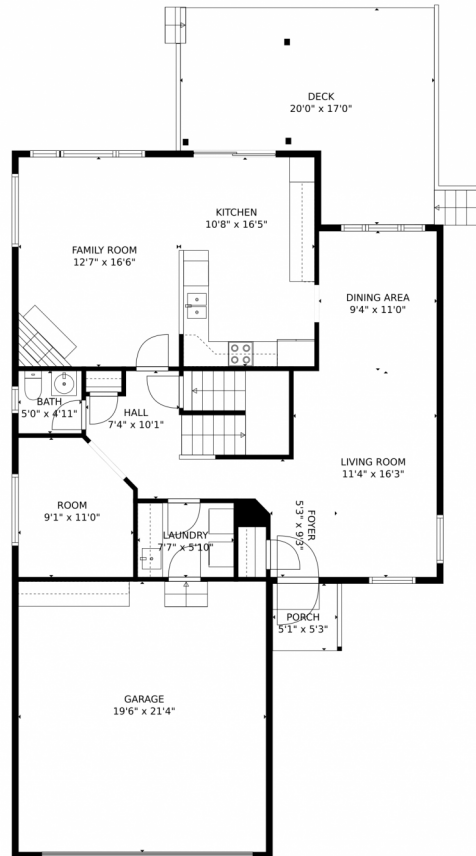


5393 Hospitality Place, Parker, CO 80134 — Main Level

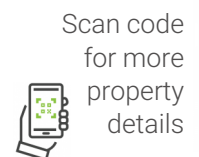


GROSS INTERNAL AREA
Below Ground: 436 sq. ft, FLOOR 2: 1036 sq. ft, FLOOR 3: 830 sq. ft
EXCLUDED AREAS: ELECTRICAL ROOM: 118 sq. ft, GARAGE: 416 sq. ft, PORCH: 27 sq. ft,
DECK: 277 sq. ft, OPEN TO BELOW: 325 sq. ft
TOTAL: 2302 sq. ft
MEASUREMENTS CALCULATED BY V1Photos.com ARE DEEMED HIGHLY RELIABLE BUT NOT GUARANTEED.

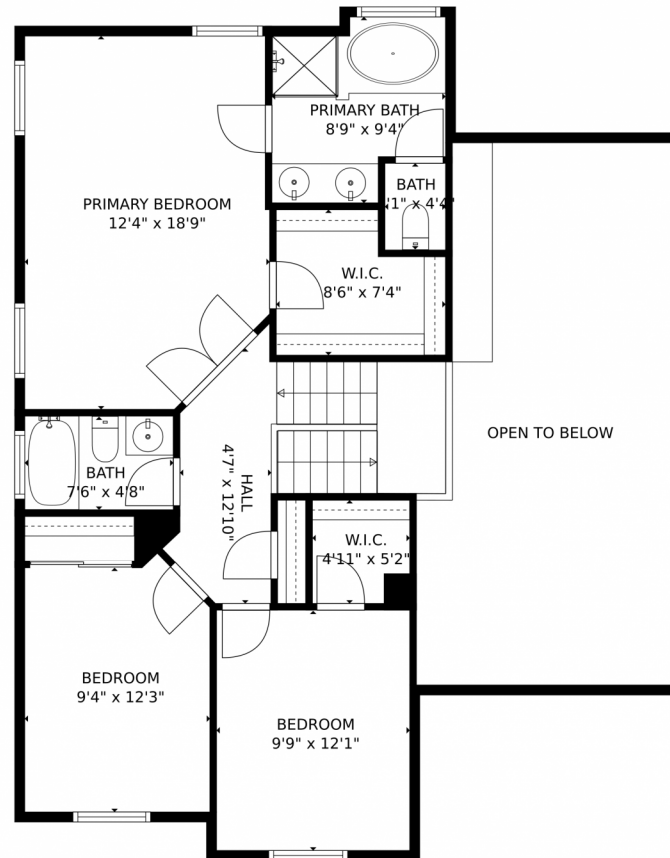
Disclaimer: Sizes and Dimensions are Approximate, Actual May Vary.



Taylor Haas
303-665-7368
taylorh@coloradorpm.com
<https://www.coloradorpm.com/available-rental-properties-denver>



5393 Hospitality Place, Parker, CO 80134 — Upper Level



GROSS INTERNAL AREA
Below Ground: 436 sq. ft, FLOOR 2: 1036 sq. ft, FLOOR 3: 830 sq. ft
EXCLUDED AREAS: ELECTRICAL ROOM: 118 sq. ft, GARAGE: 416 sq. ft, PORCH: 27 sq. ft,
DECK: 277 sq. ft, OPEN TO BELOW: 325 sq. ft
TOTAL: 2302 sq. ft
MEASUREMENTS CALCULATED BY V1Photos.COM ARE DEEMED HIGHLY RELIABLE BUT NOT GUARANTEED.



Disclaimer: Sizes and Dimensions are Approximate, Actual May Vary.



Taylor Haas

303-665-7368

taylorh@coloradorm.com

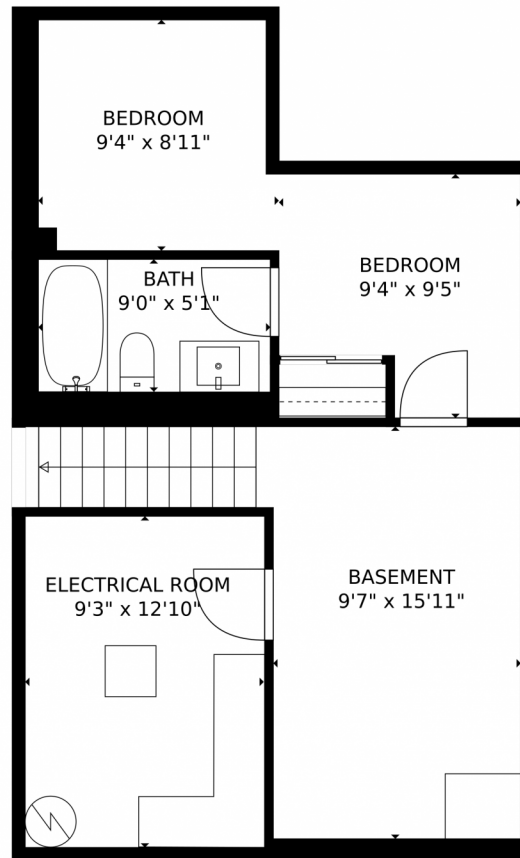
<https://www.coloradorm.com/available-rental-properties-denver>



Scan code
for more
property
details



5393 Hospitality Place, Parker, CO 80134 — Lower Level



GROSS INTERNAL AREA
Below Ground: 436 sq. ft, FLOOR 2: 1036 sq. ft, FLOOR 3: 830 sq. ft
EXCLUDED AREAS: ELECTRICAL ROOM: 118 sq. ft, GARAGE: 416 sq. ft, PORCH: 27 sq. ft,
DECK: 277 sq. ft, OPEN TO BELOW: 325 sq. ft
TOTAL: 2302 sq. ft
MEASUREMENTS CALCULATED BY V1Photos.com ARE DEEMED HIGHLY RELIABLE BUT NOT GUARANTEED.

Disclaimer: Sizes and Dimensions are Approximate, Actual May Vary.



Taylor Haas

303-665-7368

taylorh@coloradorpm.com

<https://www.coloradorpm.com/available-rental-properties-denver>



Scan code
for more
property
details



5393 Hospitality Place, Parker, CO 80134 — All Levels



GROSS INTERNAL AREA
Below Ground: 436 sq. ft., FLOOR 2: 1036 sq. ft., FLOOR 3: 830 sq. ft.
EXCLUDED AREAS: ELECTRICAL ROOM: 118 sq. ft., GARAGE: 416 sq. ft., PORCH: 27 sq. ft.,
DECK: 277 sq. ft., OPEN TO BELOW: 325 sq. ft.
TOTAL: 2302 sq. ft.
MEASUREMENTS CALCULATED BY V1Photos.com ARE DEEMED HIGHLY RELIABLE BUT NOT GUARANTEED.



Disclaimer: Sizes and Dimensions are Approximate, Actual May Vary.



Taylor Haas

303-665-7368

taylorh@coloradorpm.com

<https://www.coloradorpm.com/available-rental-properties-denver>



Scan code
for more
property
details

