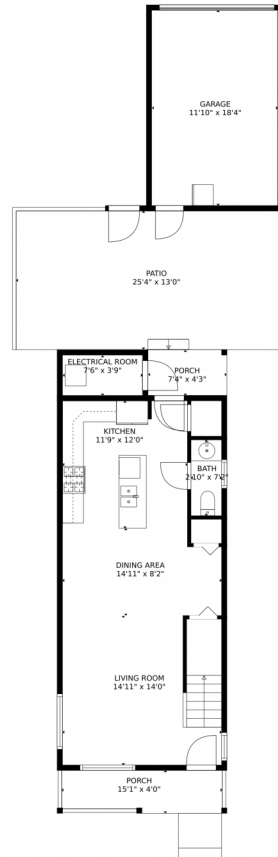


2662 Diamondback Drive, Berthoud, CO 80513 — Main Level



GROSS INTERNAL AREA
FLOOR 1: 514 sq. ft, FLOOR 2: 540 sq. ft
EXCLUDED AREAS: ELECTRICAL ROOM: 29 sq. ft, GARAGE: 217 sq. ft, PORCH: 89 sq. ft,
PATIO: 329 sq. ft
TOTAL: 1054 sq. ft
MEASUREMENTS CALCULATED BY V1Photos.com ARE DEEMED HIGHLY RELIABLE BUT NOT GUARANTEED.



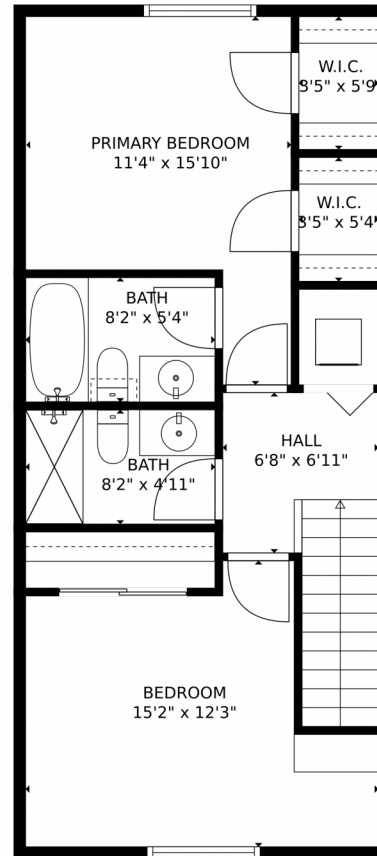
Disclaimer: Sizes and Dimensions are Approximate, Actual May Vary.



Brandon Bidwell
970-215-1573
bidwell@windermere.com



2662 Diamondback Drive, Berthoud, CO 80513 — Upper Level



GROSS INTERNAL AREA
FLOOR 1: 514 sq. ft, FLOOR 2: 540 sq. ft
EXCLUDED AREAS: ELECTRICAL ROOM: 29 sq. ft, GARAGE: 217 sq. ft, PORCH: 89 sq. ft,
PATIO: 329 sq. ft
TOTAL: 1054 sq. ft
MEASUREMENTS CALCULATED BY V1Photos.com ARE DEEMED HIGHLY RELIABLE BUT NOT GUARANTEED.



Disclaimer: Sizes and Dimensions are Approximate, Actual May Vary.



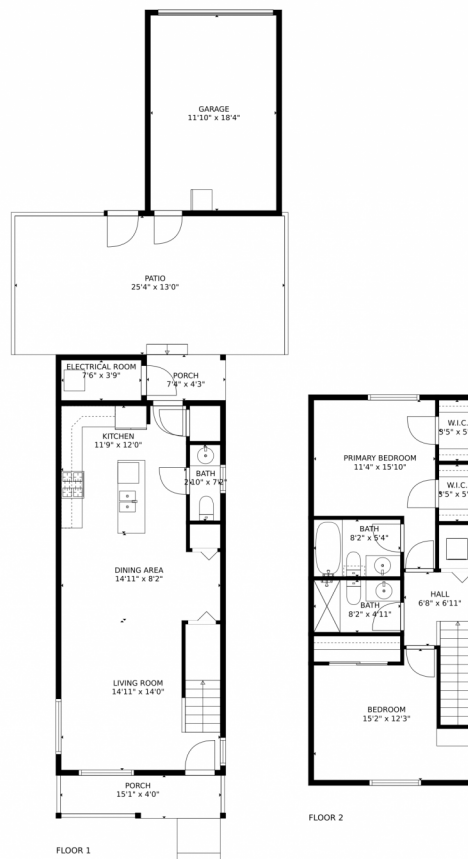
Brandon Bidwell
970-215-1573
bidwell@windermere.com



Scan code
for more
property
details



2662 Diamondback Drive, Berthoud, CO 80513 — All Levels



GROSS INTERNAL AREA
 FLOOR 1: 514 sq. ft, FLOOR 2: 540 sq. ft
 EXCLUDED AREAS: ELECTRICAL ROOM: 29 sq. ft, GARAGE: 217 sq. ft, PORCH: 89 sq. ft.
 TOTAL: 329 sq. ft
 TOTAL: 1054 sq. ft
 MEASUREMENTS CALCULATED BY V1Photos.com ARE DEEMED HIGHLY RELIABLE BUT NOT GUARANTEED.



Disclaimer: Sizes and Dimensions are Approximate, Actual May Vary.



Brandon Bidwell
 970-215-1573
 bidwell@windermere.com



Scan code
 for more
 property
 details

