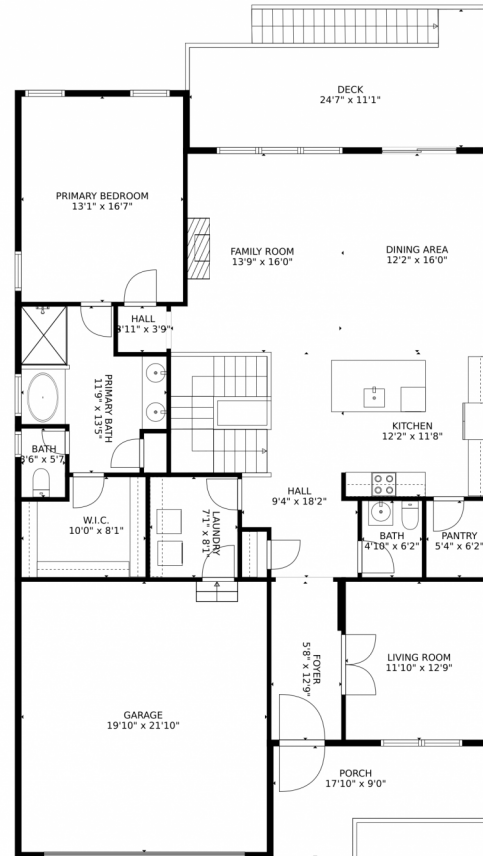


658 Tippen Place, Castle Rock, CO 80104 — Main Level



GROSS INTERNAL AREA
Below Ground: 1076 sq. ft, FLOOR 2: 1591 sq. ft
EXCLUDED AREAS: ELECTRICAL ROOM: 419 sq. ft, PATIO: 311 sq. ft, GARAGE: 432 sq. ft,
DECK: 212 sq. ft, PORCH: 125 sq. ft
TOTAL: 2667 sq. ft
MEASUREMENTS CALCULATED BY V1Photos.com ARE DEEMED HIGHLY RELIABLE BUT NOT GUARANTEED.



Disclaimer: Sizes and Dimensions are Approximate, Actual May Vary.



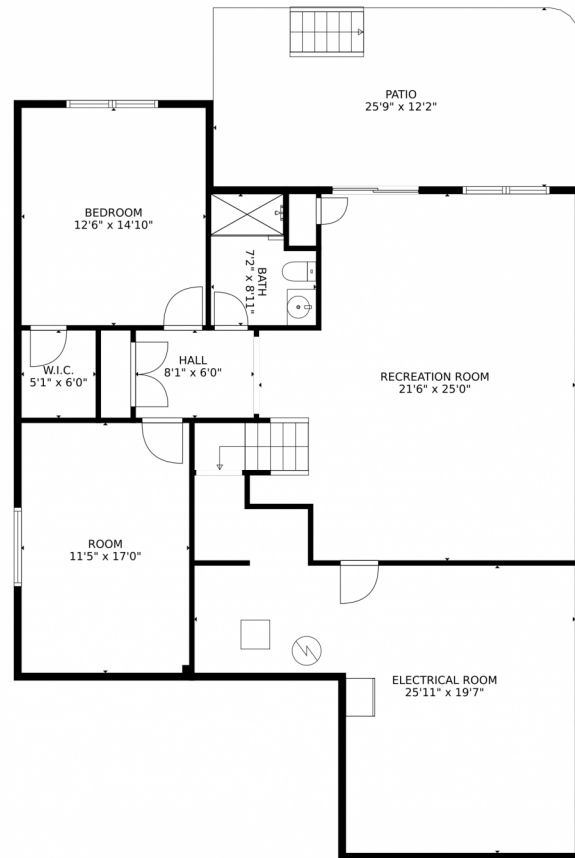
Tracy Tannascoli
303-587-3200
tracy4homes@comcast.net



Scan code
for more
property
details



658 Tippen Place, Castle Rock, CO 80104 — Basement



GROSS INTERNAL AREA
Below Ground: 1076 sq. ft, FLOOR 2: 1591 sq. ft
EXCLUDED AREAS: ELECTRICAL ROOM: 419 sq. ft, PATIO: 311 sq. ft, GARAGE: 432 sq. ft,
DECK: 212 sq. ft, PORCH: 125 sq. ft
TOTAL: 2667 sq. ft
MEASUREMENTS CALCULATED BY V1Photos.com ARE DEEMED HIGHLY RELIABLE BUT NOT GUARANTEED.



Disclaimer: Sizes and Dimensions are Approximate, Actual May Vary.



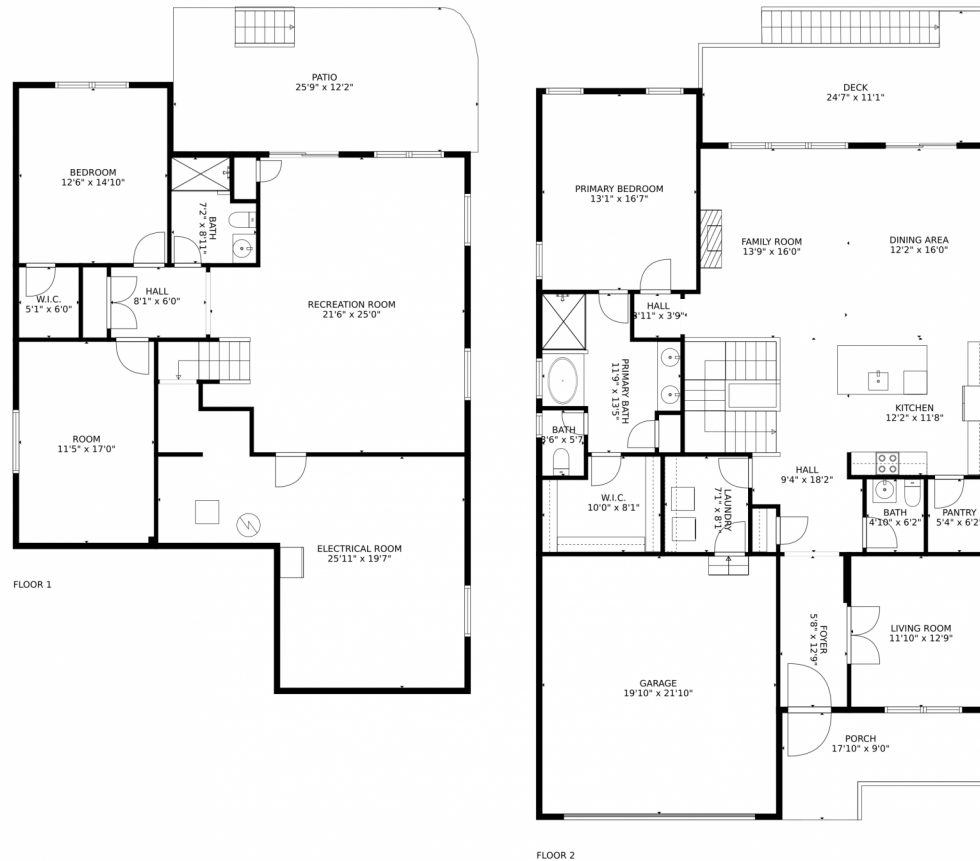
Tracy Tannascoli
303-587-3200
tracy4homes@comcast.net



Scan code
for more
property
details



658 Tippen Place, Castle Rock, CO 80104 – All Levels



GROSS INTERNAL AREA
Below Ground: 1076 sq. ft, FLOOR 2: 1591 sq. ft
EXCLUDED AREAS: ELECTRICAL ROOM: 419 sq. ft, PATIO: 311 sq. ft, GARAGE: 432 sq. ft,
DECK: 212 sq. ft, PORCH: 125 sq. ft
TOTAL: 2667 sq. ft
MEASUREMENTS CALCULATED BY V1Photos.com ARE DEEMED HIGHLY RELIABLE BUT NOT GUARANTEED.



Disclaimer: Sizes and Dimensions are Approximate, Actual May Vary.



Tracy Tannascoli
303-587-3200
tracy4homes@comcast.net

