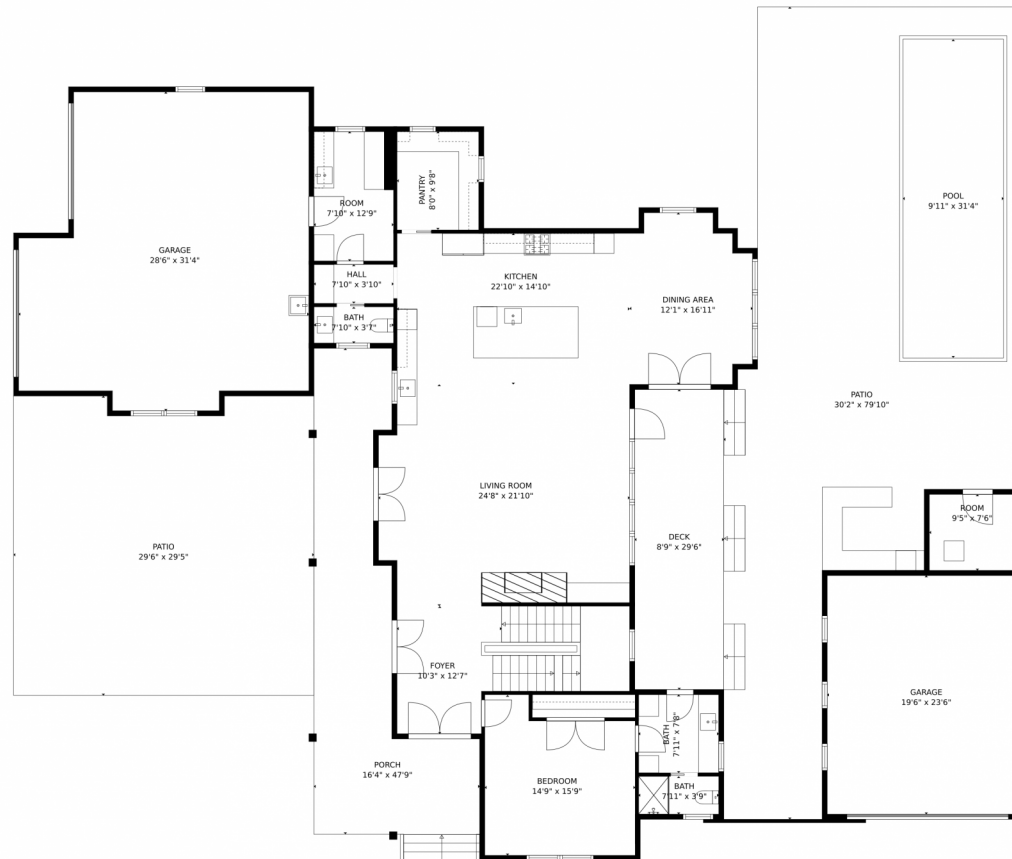


2338 Falcon Drive, Fort Collins, CO 80526 — Main Level



GROSS INTERNAL AREA
FLOOR 1: 1733 sq. ft. FLOOR 2: 2244 sq. ft.
FLOOR 3: 1713 sq. ft. EXCLUDED AREAS:
GARAGE: 1238 sq. ft. DECK: 258 sq. ft.
PATIO: 2549 sq. ft. PORCH: 442 sq. ft.
BALCONY: 421 sq. ft.
TOTAL: 5690 sq. ft.

MEASUREMENTS CALCULATED BY V1Photos.com ARE DEEMED HIGHLY RELIABLE BUT NOT GUARANTEED.



Disclaimer: Sizes and Dimensions are Approximate, Actual May Vary.



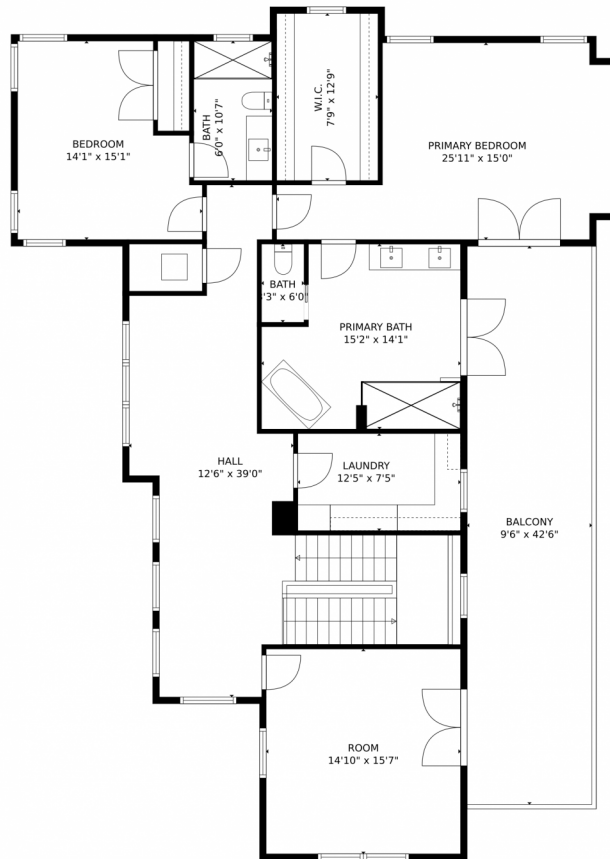
Devin Ferrey
970-691-1234
devin@fr-corp.com



Scan code
for more
property
details



2338 Falcon Drive, Fort Collins, CO 80526 — Upper Level



GROSS INTERNAL AREA
FLOOR 1: 1733 sq. ft. FLOOR 2: 2244 sq. ft.
FLOOR 3: 1713 sq. ft. EXCLUDED AREAS:
GARAGE: 1238 sq. ft. DECK: 258 sq. ft.
PATIO: 2549 sq. ft. PORCH: 442 sq. ft.
BALCONY: 421 sq. ft.
TOTAL: 5690 sq. ft.

MEASUREMENTS CALCULATED BY V1Photos.com ARE DEEMED HIGHLY RELIABLE BUT NOT GUARANTEED.



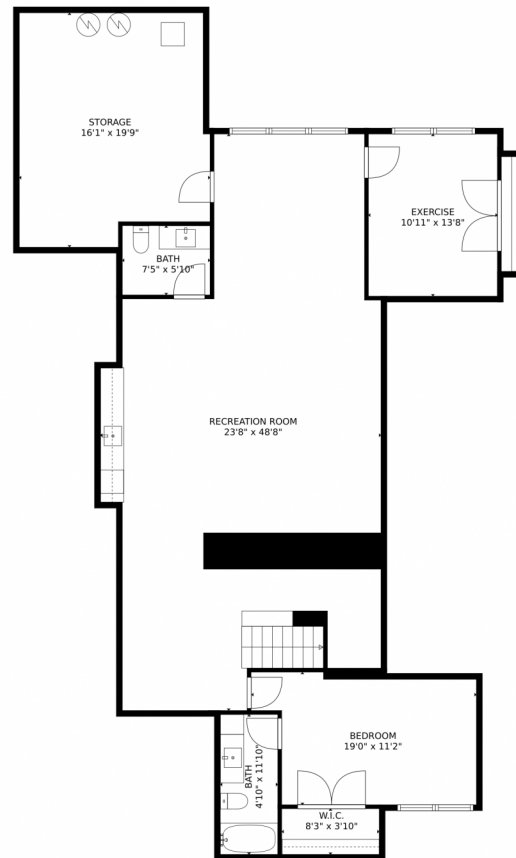
Disclaimer: Sizes and Dimensions are Approximate, Actual May Vary.



Devin Ferrey
970-691-1234
devin@fr-corp.com



2338 Falcon Drive, Fort Collins, CO 80526 — Lower Level



GROSS INTERNAL AREA
FLOOR 1: 1733 sq. ft, FLOOR 2: 2244 sq. ft
FLOOR 3: 1713 sq. ft, EXCLUDED AREAS:
GARAGE: 1238 sq. ft, DECK: 258 sq. ft
PATIO: 2549 sq. ft, PORCH: 442 sq. ft
BALCONY: 421 sq. ft
TOTAL: 5690 sq. ft

MEASUREMENTS CALCULATED BY V1Photos.com ARE DEEMED HIGHLY RELIABLE BUT NOT GUARANTEED.



Disclaimer: Sizes and Dimensions are Approximate, Actual May Vary.



Devin Ferrey
970-691-1234
devin@fr-corp.com



2338 Falcon Drive, Fort Collins, CO 80526 — All Levels



GROSS INTERNAL AREA
FLOOR 1: 1733 sq. ft, FLOOR 2: 2244 sq. ft
FLOOR 3: 1713 sq. ft, EXCLUDED AREAS:
GARAGE: 1238 sq. ft, DECK: 258 sq. ft
PATIO: 2549 sq. ft, PORCH: 442 sq. ft
BALCONY: 421 sq. ft
TOTAL: 5690 sq. ft

MEASUREMENTS CALCULATED BY V1Photos.com ARE DEEMED HIGHLY RELIABLE BUT NOT GUARANTEED.



Disclaimer: Sizes and Dimensions are Approximate, Actual May Vary.



Devin Ferrey
970-691-1234
devin@fr-corp.com



Scan code
for more
property
details

