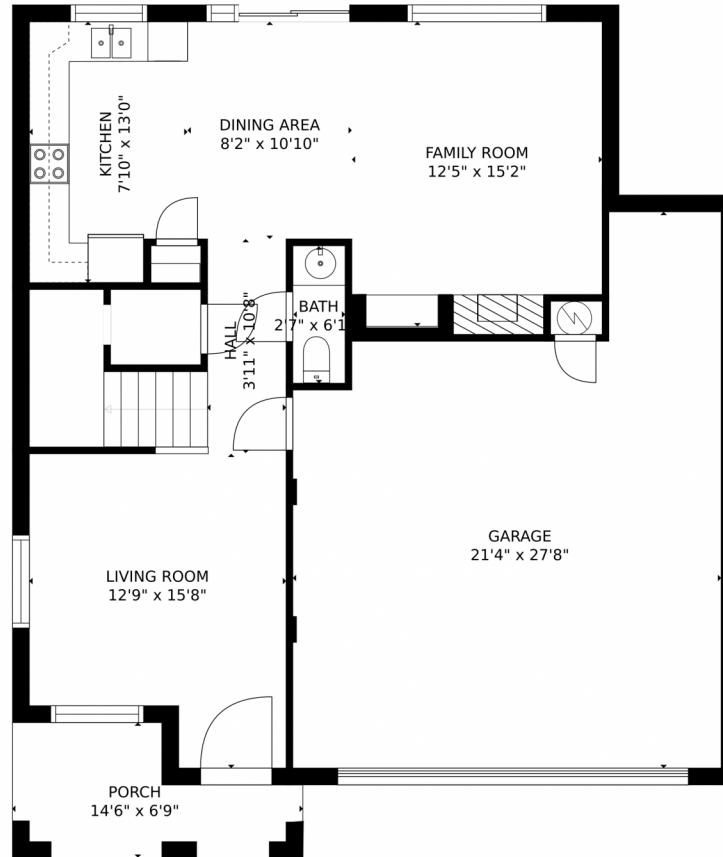


9468 Pony Gulch Way, Colorado Springs, CO 80925 – Main Level



GROSS INTERNAL AREA
FLOOR 1: 701 sq. ft. FLOOR 2: 862 sq. ft
EXCLUDED AREAS: , GARAGE: 481 sq. ft
PORCH: 76 sq. ft
TOTAL: 1563 sq. ft
MEASUREMENTS CALCULATED BY V1Photos.com ARE DEEMED HIGHLY RELIABLE BUT NOT GUARANTEED.



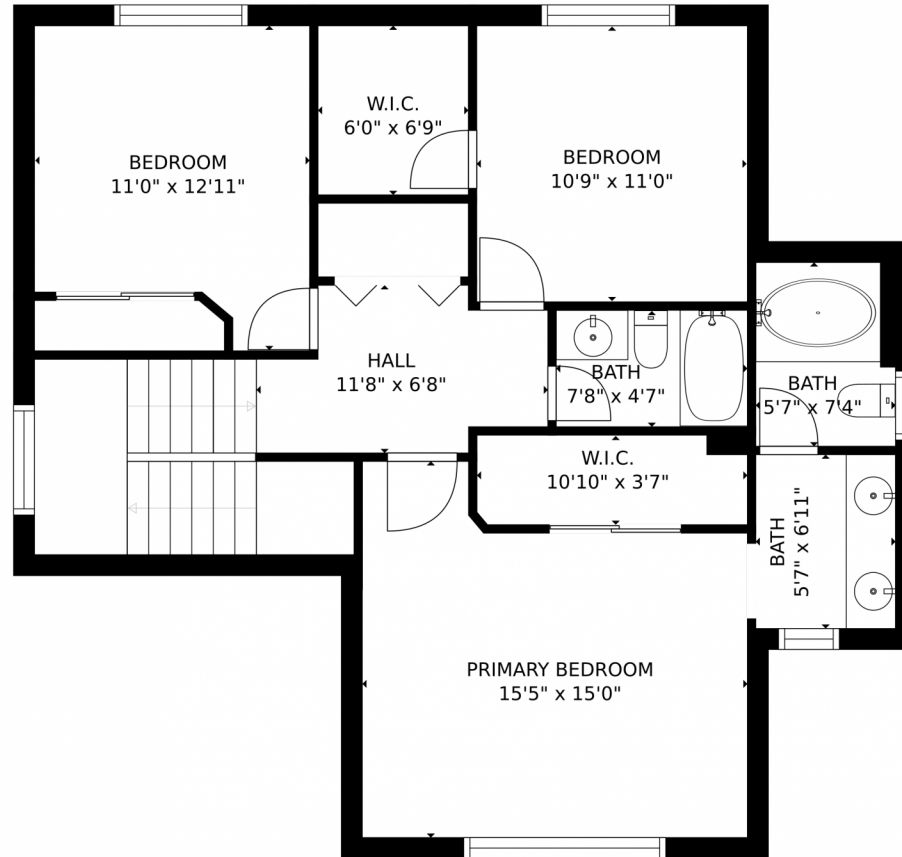
Disclaimer: Sizes and Dimensions are Approximate, Actual May Vary.



Taylor Haas
303-665-7368
taylorh@coloradorpm.com
<https://www.coloradorpm.com/available-rental-properties-denv>



9468 Pony Gulch Way, Colorado Springs, CO 80925 – Upper Level



GROSS INTERNAL AREA
FLOOR 1: 701 sq. ft. FLOOR 2: 862 sq. ft
EXCLUDED AREAS: , GARAGE: 481 sq. ft
PORCH: 76 sq. ft
TOTAL: 1563 sq. ft
MEASUREMENTS CALCULATED BY V1Photos.COM ARE DEEMED HIGHLY RELIABLE BUT NOT GUARANTEED.



Disclaimer: Sizes and Dimensions are Approximate, Actual May Vary.



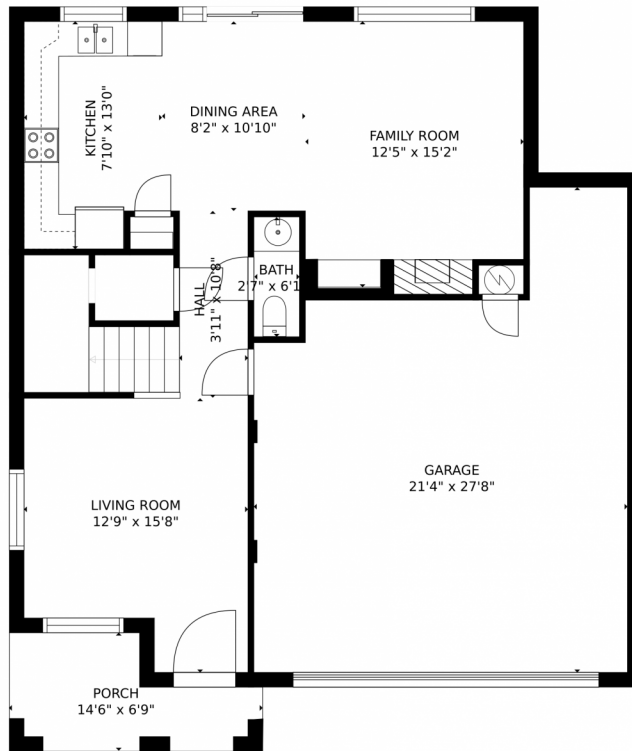
Taylor Haas
303-665-7368
taylorh@coloradorm.com
<https://www.coloradorm.com/available-rental-properties-denver>



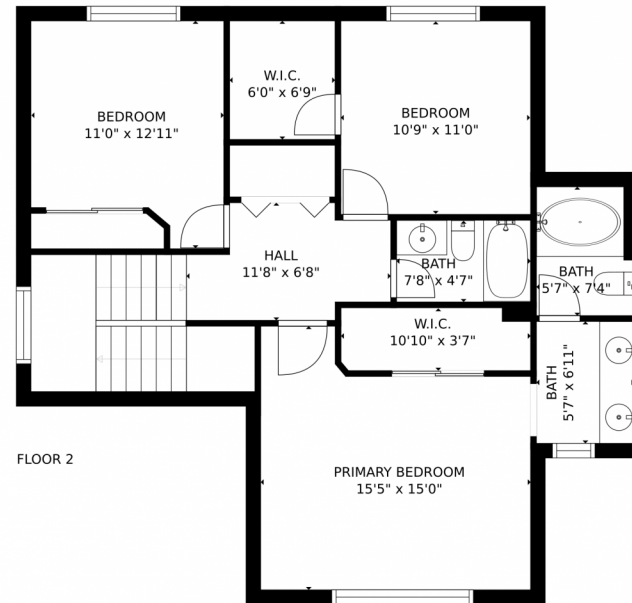
Scan code
for more
property
details



9468 Pony Gulch Way, Colorado Springs, CO 80925 – All Levels



FLOOR 1



FLOOR 2

GROSS INTERNAL AREA
FLOOR 1: 701 sq. ft. FLOOR 2: 862 sq. ft
EXCLUDED AREAS: , GARAGE: 481 sq. ft
PORCH: 76 sq. ft
TOTAL: 1563 sq. ft

MEASUREMENTS CALCULATED BY V1Photos.com ARE DEEMED HIGHLY RELIABLE BUT NOT GUARANTEED.



Disclaimer: Sizes and Dimensions are Approximate, Actual May Vary.



Taylor Haas

303-665-7368

taylorh@coloradorpm.com

<https://www.coloradorpm.com/available-rental-properties-denver>



Scan code
for more
property
details

