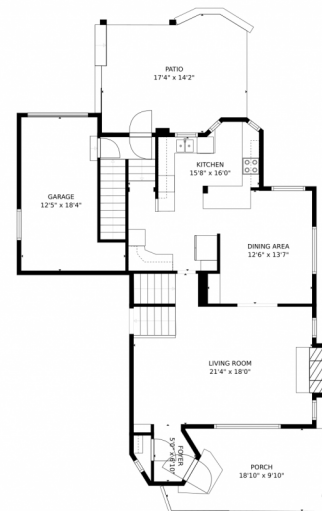


# 1600 N Leyden Street, Denver, CO 80220 — Main Level



GROSS INTERNAL AREA  
FLOOR 1: 669 sq. ft. FLOOR 2: 303 sq. ft.  
FLOOR 3: 806 sq. ft. FLOOR 4: 471 sq. ft.  
FLOOR 5: 391 sq. ft. EXCLUDED AREAS:  
GARAGE: 569 sq. ft. PATIO: 219 sq. ft.  
PORCH: 163 sq. ft. BALCONY: 62 sq. ft.  
TOTAL: 2640 sq. ft.

MEASUREMENTS CALCULATED BY V1Photos.com ARE DEEMED HIGHLY RELIABLE BUT NOT GUARANTEED.



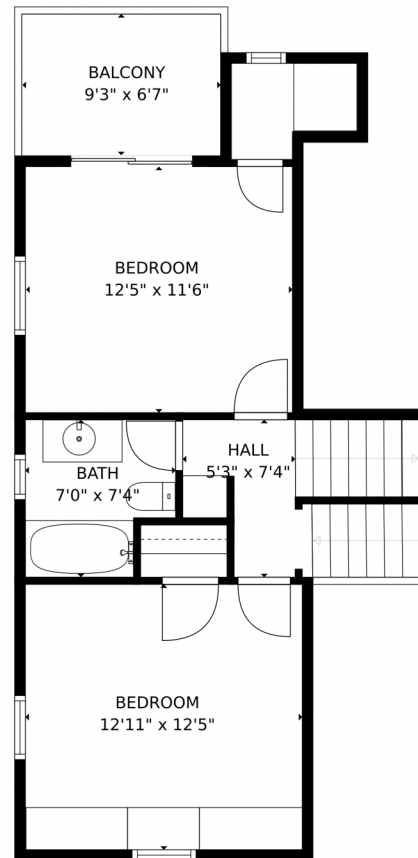
Disclaimer: Sizes and Dimensions are Approximate, Actual May Vary.



**Jennifer Steinert**  
303-246-2226  
jen@madisonprops.com



## 1600 N Leyden Street, Denver, CO 80220 — Upper Level



GROSS INTERNAL AREA  
FLOOR 1: 669 sq. ft, FLOOR 2: 303 sq. ft  
FLOOR 3: 806 sq. ft, FLOOR 4: 471 sq. ft  
FLOOR 5: 391 sq. ft, EXCLUDED AREAS:  
GARAGE: 569 sq. ft, PATIO: 219 sq. ft  
PORCH: 163 sq. ft, BALCONY: 62 sq. ft  
TOTAL: 2640 sq. ft  
MEASUREMENTS CALCULATED BY V1Photos.com ARE DEEMED HIGHLY RELIABLE BUT NOT GUARANTEED.



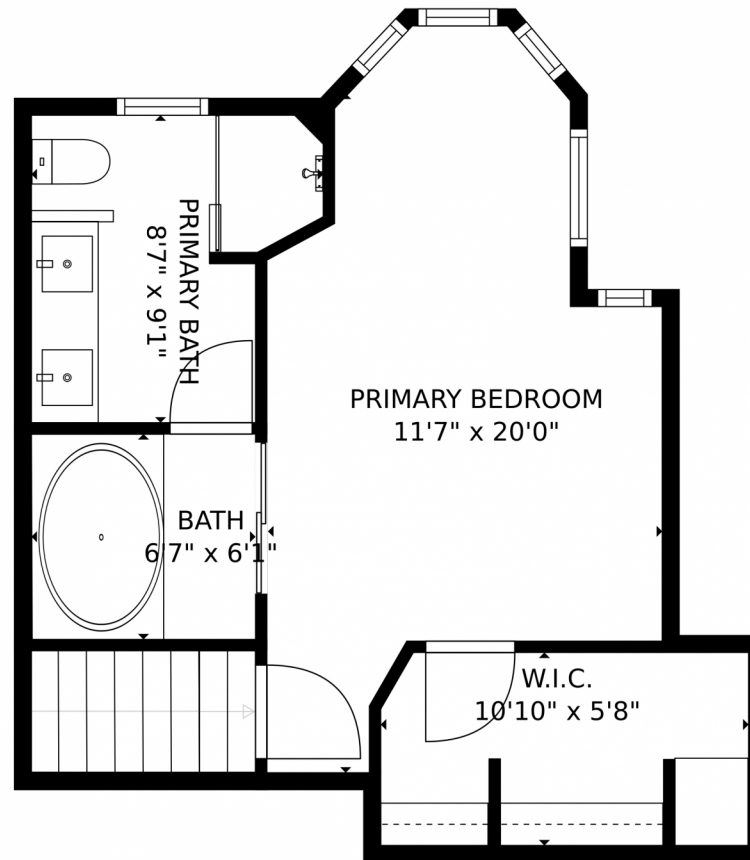
Disclaimer: Sizes and Dimensions are Approximate, Actual May Vary.



**Jennifer Steinert**  
303-246-2226  
jen@madisonprops.com



## 1600 N Leyden Street, Denver, CO 80220 — Top Level



GROSS INTERNAL AREA  
FLOOR 1: 669 sq. ft, FLOOR 2: 303 sq. ft  
FLOOR 3: 806 sq. ft, FLOOR 4: 471 sq. ft  
FLOOR 5: 391 sq. ft, EXCLUDED AREAS:  
GARAGE: 569 sq. ft, PATIO: 219 sq. ft  
PORCH: 163 sq. ft, BALCONY: 62 sq. ft  
TOTAL: 2640 sq. ft

MEASUREMENTS CALCULATED BY V1Photos.com ARE DEEMED HIGHLY RELIABLE BUT NOT GUARANTEED.



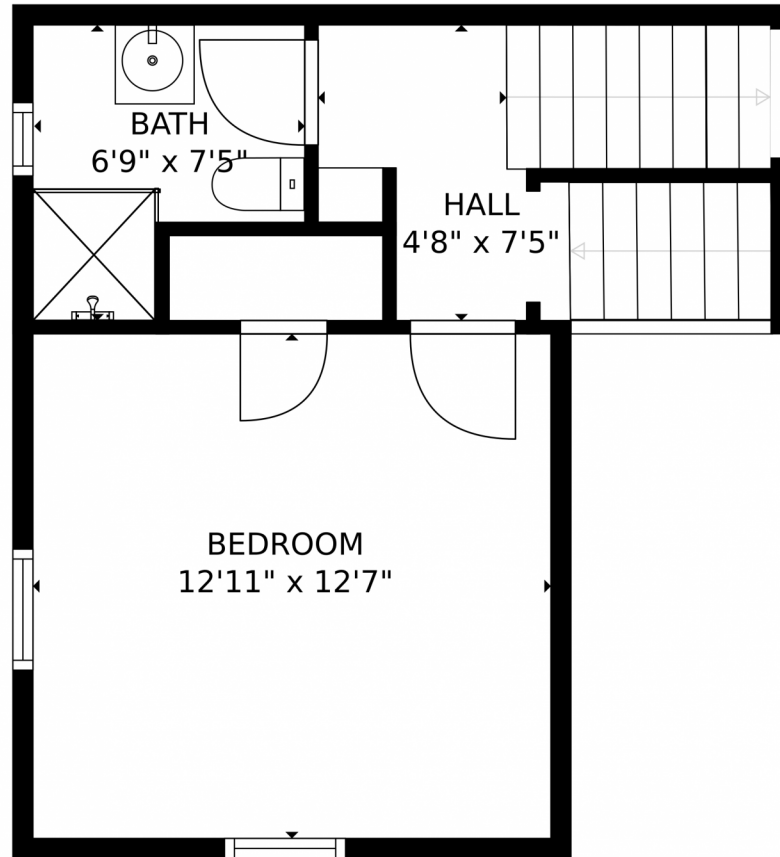
Disclaimer: Sizes and Dimensions are Approximate, Actual May Vary.



**Jennifer Steinert**  
303-246-2226  
jen@madisonprops.com



## 1600 N Leyden Street, Denver, CO 80220 — Lower Level



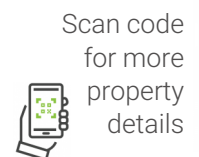
GROSS INTERNAL AREA  
FLOOR 1: 669 sq. ft, FLOOR 2: 303 sq. ft  
FLOOR 3: 806 sq. ft, FLOOR 4: 471 sq. ft  
FLOOR 5: 391 sq. ft, EXCLUDED AREAS:  
GARAGE: 569 sq. ft, PATIO: 219 sq. ft  
PORCH: 163 sq. ft, BALCONY: 62 sq. ft  
TOTAL: 2640 sq. ft  
MEASUREMENTS CALCULATED BY V1Photos.com ARE DEEMED HIGHLY RELIABLE BUT NOT GUARANTEED.



Disclaimer: Sizes and Dimensions are Approximate, Actual May Vary.



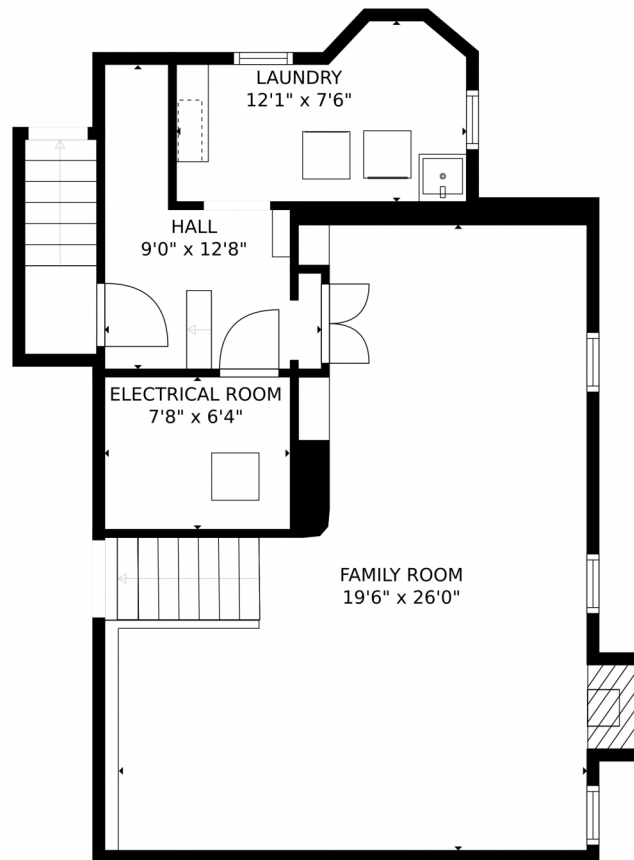
**Jennifer Steinert**  
303-246-2226  
jen@madisonprops.com



Scan code  
for more  
property  
details



## 1600 N Leyden Street, Denver, CO 80220 — Bottom Level



GROSS INTERNAL AREA  
FLOOR 1: 669 sq. ft, FLOOR 2: 303 sq. ft  
FLOOR 3: 806 sq. ft, FLOOR 4: 471 sq. ft  
FLOOR 5: 391 sq. ft, EXCLUDED AREAS:  
GARAGE: 569 sq. ft, PATIO: 219 sq. ft  
PORCH: 163 sq. ft, BALCONY: 62 sq. ft  
TOTAL: 2640 sq. ft

MEASUREMENTS CALCULATED BY V1Photos.com ARE DEEMED HIGHLY RELIABLE BUT NOT GUARANTEED.



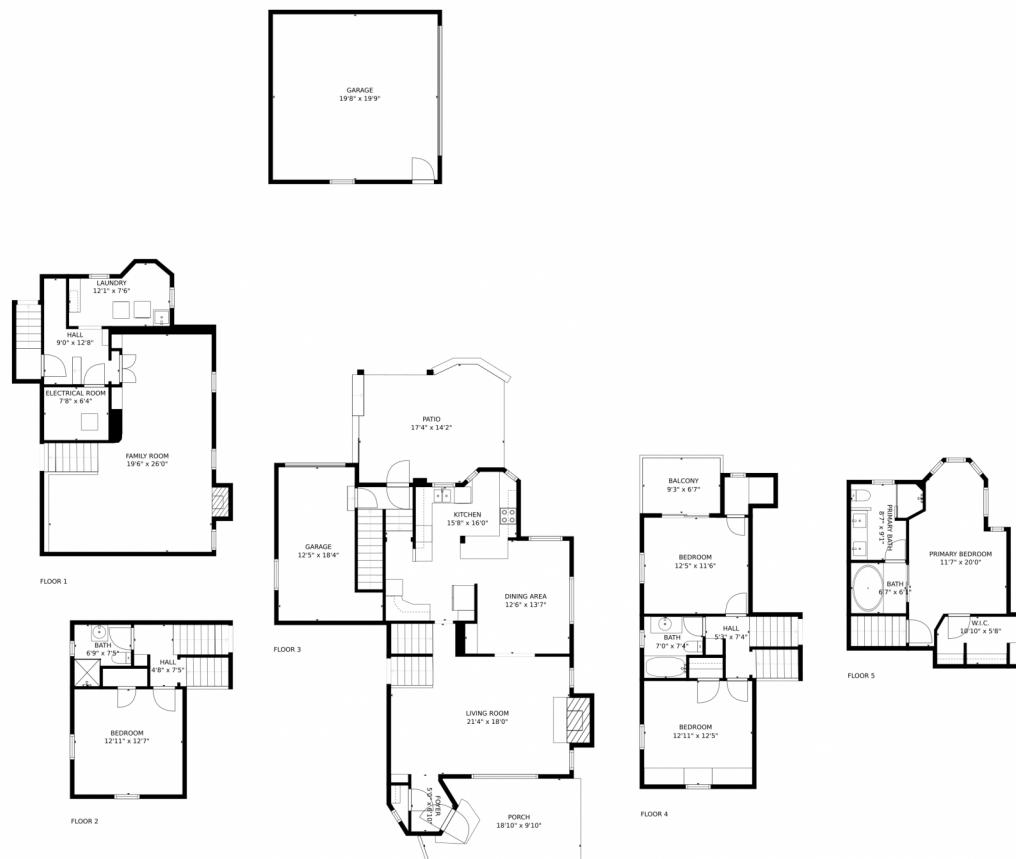
Disclaimer: Sizes and Dimensions are Approximate, Actual May Vary.



**Jennifer Steinert**  
303-246-2226  
jen@madisonprops.com



# 1600 N Leyden Street, Denver, CO 80220 — All Levels



GROSS INTERNAL AREA  
FLOOR 1: 669 sq. ft. FLOOR 2: 303 sq. ft.  
FLOOR 3: 806 sq. ft. FLOOR 4: 471 sq. ft.  
FLOOR 5: 391 sq. ft. EXCLUDED AREAS:  
GARAGE: 569 sq. ft. PATIO: 219 sq. ft.  
PORCH: 163 sq. ft. BALCONY: 62 sq. ft.  
TOTAL: 2640 sq. ft.  
MEASUREMENTS CALCULATED BY V1Photos.com ARE DEEMED HIGHLY RELIABLE BUT NOT GUARANTEED.



Disclaimer: Sizes and Dimensions are Approximate, Actual May Vary.



**Jennifer Steinert**  
303-246-2226  
jen@madisonprops.com



Scan code  
for more  
property  
details

