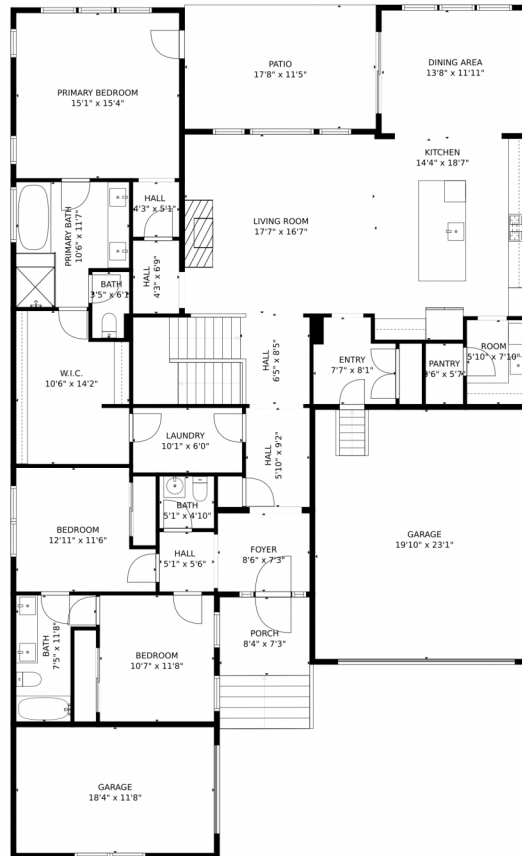


# 4838 Saddle Iron Rd, Castle Rock, CO 80118 — Main Level



GROSS INTERNAL AREA  
FLOOR 1: 113 sq. ft, FLOOR 2: 2204 sq. ft  
EXCLUDED AREAS: , UNFINISHED BASEMENT: 1983 sq. ft  
GARAGE: 672 sq. ft, PATIO: 203 sq. ft  
PORCH: 101 sq. ft  
TOTAL: 2317 sq. ft

MEASUREMENTS CALCULATED BY V1Photos.com ARE DEEMED HIGHLY RELIABLE BUT NOT GUARANTEED.



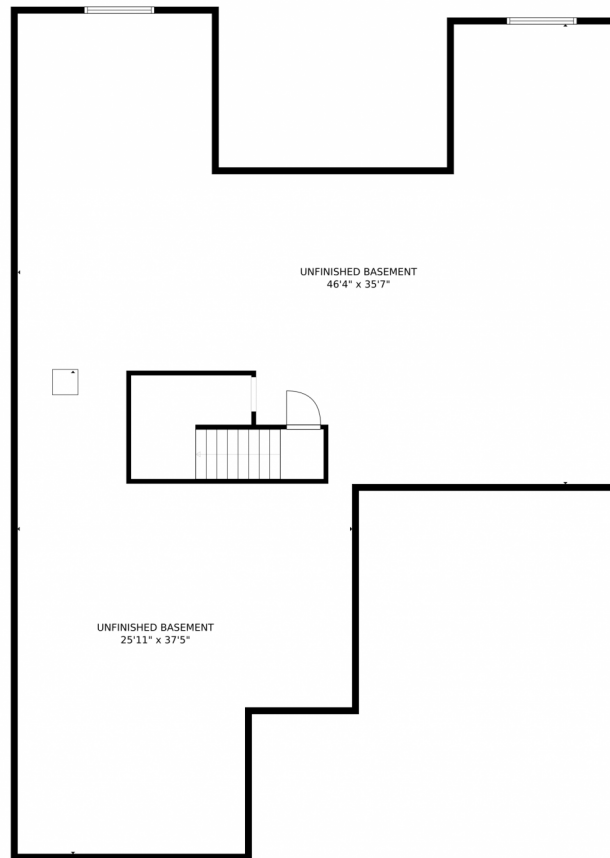
Disclaimer: Sizes and Dimensions are Approximate, Actual May Vary.



**Tony Geraty**  
720-629-9999  
tgsellshomes@gmail.com



## 4838 Saddle Iron Rd, Castle Rock, CO 80118 — Lower Level



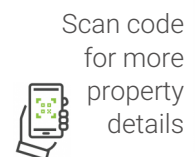
GROSS INTERNAL AREA  
FLOOR 1: 113 sq. ft, FLOOR 2: 2204 sq. ft  
EXCLUDED AREAS: , UNFINISHED BASEMENT: 1983 sq. ft  
GARAGE: 672 sq. ft, PATIO: 203 sq. ft  
PORCH: 101 sq. ft  
TOTAL: 2317 sq. ft  
MEASUREMENTS CALCULATED BY V1Photos.com ARE DEEMED HIGHLY RELIABLE BUT NOT GUARANTEED.



Disclaimer: Sizes and Dimensions are Approximate, Actual May Vary.



**Tony Geraty**  
720-629-9999  
tgsellshomes@gmail.com



# 4838 Saddle Iron Rd, Castle Rock, CO 80118 – All Levels



GROSS INTERNAL AREA  
 FLOOR 1: 113 sq. ft, FLOOR 2: 2204 sq. ft  
 EXCLUDED AREAS: , UNFINISHED BASEMENT: 1983 sq. ft  
 GARAGE: 672 sq. ft, PATIO: 203 sq. ft  
 PORCH: 101 sq. ft  
 TOTAL: 2317 sq. ft

MEASUREMENTS CALCULATED BY V1Photos.COM ARE DEEMED HIGHLY RELIABLE BUT NOT GUARANTEED.



Disclaimer: Sizes and Dimensions are Approximate, Actual May Vary.



**Tony Geraty**  
 720-629-9999  
 tgsellshomes@gmail.com

