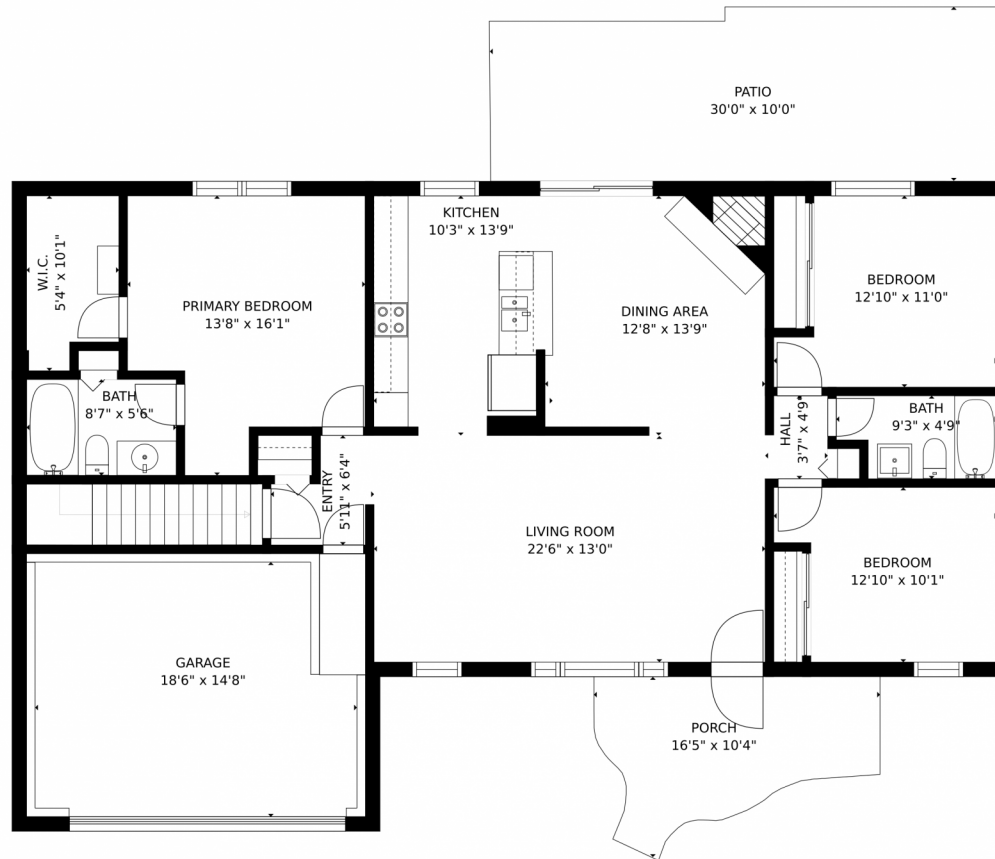


1358 South Oswego Court, Aurora, CO 80012 — Main Level



GROSS INTERNAL AREA
FLOOR 1: 1096 sq. ft, FLOOR 2: 1362 sq. ft
EXCLUDED AREAS: , UNFINISHED BASEMENT: 236 sq. ft
GARAGE: 295 sq. ft, PATIO: 290 sq. ft
PORCH: 119 sq. ft
TOTAL: 2458 sq. ft

MEASUREMENTS CALCULATED BY V1Photos.COM ARE DEEMED HIGHLY RELIABLE BUT NOT GUARANTEED.



Disclaimer: Sizes and Dimensions are Approximate, Actual May Vary.



Taylor Haas

303-665-7368

taylorh@coloradorpm.com

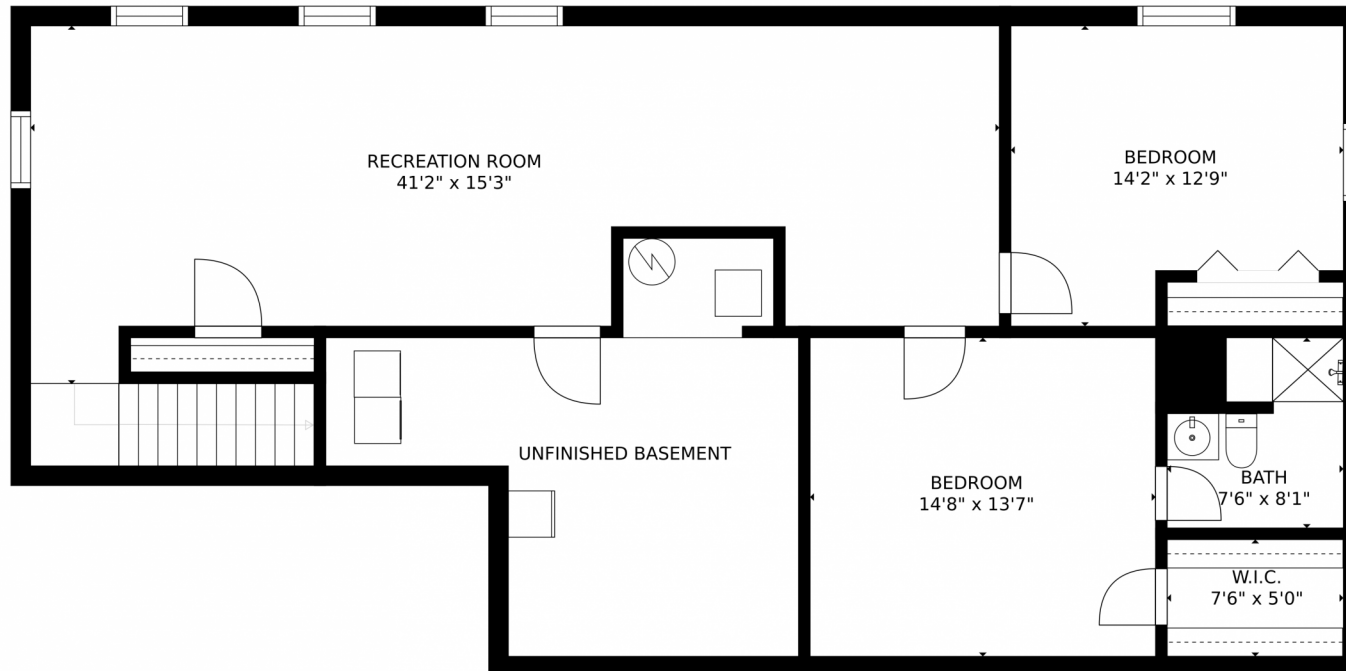
<https://www.coloradorpm.com/available-rental-properties-denver>



Scan code
for more
property
details



1358 South Oswego Court, Aurora, CO 80012 — Lower Level



GROSS INTERNAL AREA
FLOOR 1: 1096 sq. ft, FLOOR 2: 1362 sq. ft
EXCLUDED AREAS: , UNFINISHED BASEMENT: 236 sq. ft
GARAGE: 295 sq. ft, PATIO: 290 sq. ft
PORCH: 119 sq. ft
TOTAL: 2458 sq. ft

MEASUREMENTS CALCULATED BY V1Photos.com ARE DEEMED HIGHLY RELIABLE BUT NOT GUARANTEED.



Disclaimer: Sizes and Dimensions are Approximate, Actual May Vary.



Taylor Haas

303-665-7368

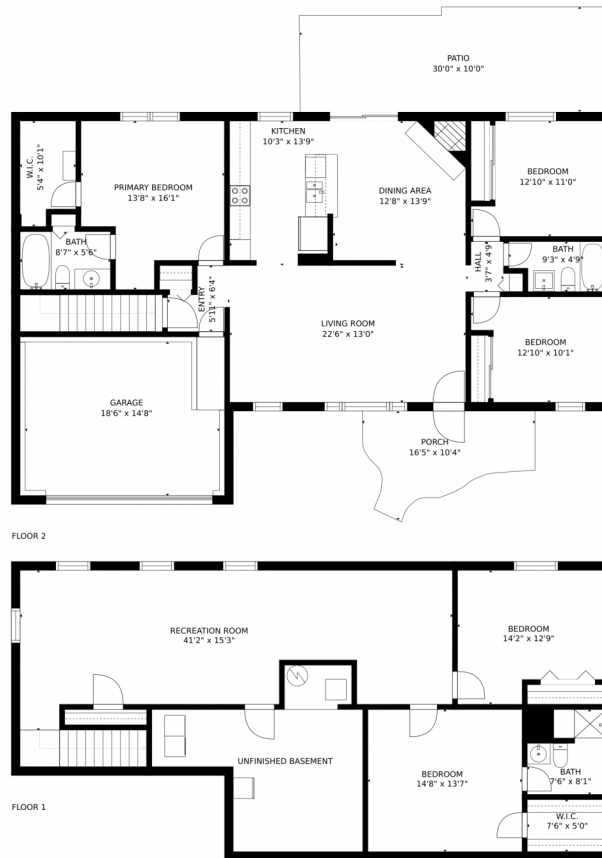
taylorh@coloradorpm.com

<https://www.coloradorpm.com/available-rental-properties-denver>

Scan code
for more
property
details



1358 South Oswego Court, Aurora, CO 80012 — All Levels



GROSS INTERNAL AREA
FLOOR 1: 1096 sq. ft, FLOOR 2: 1362 sq. ft
EXCLUDED AREAS: , UNFINISHED BASEMENT: 236 sq. ft
GARAGE: 295 sq. ft, PATIO: 290 sq. ft
PORCH: 119 sq. ft
TOTAL: 2458 sq. ft

MEASUREMENTS CALCULATED BY V1Photos.com ARE DEEMED HIGHLY RELIABLE BUT NOT GUARANTEED.



Disclaimer: Sizes and Dimensions are Approximate, Actual May Vary.



Taylor Haas

303-665-7368

taylorh@coloradorm.com

<https://www.coloradorm.com/available-rental-properties-denver>



Scan code
for more
property
details

