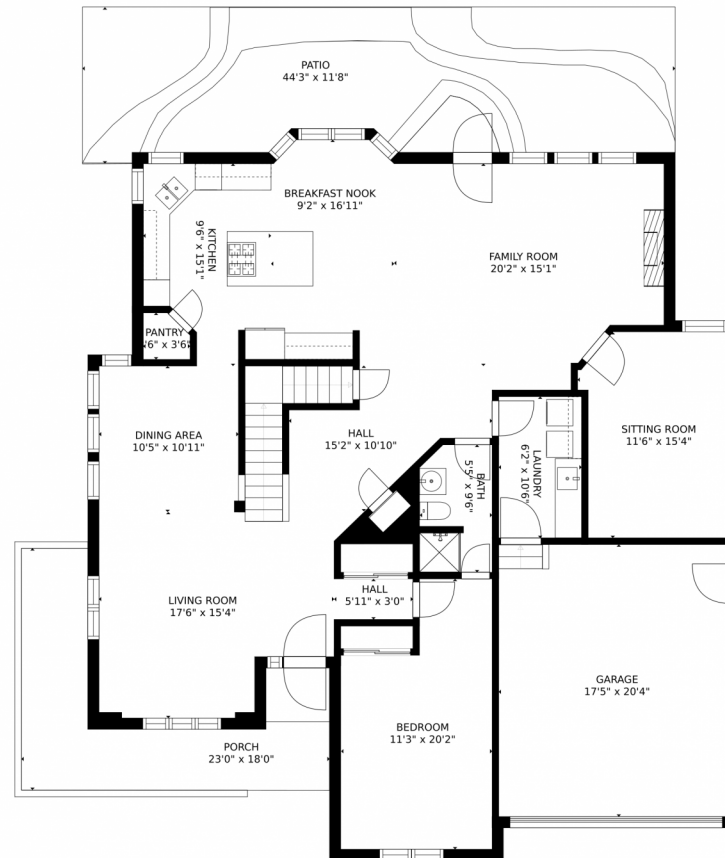


1996 Clipper Drive, Lafayette, CO 80026 — Main Level



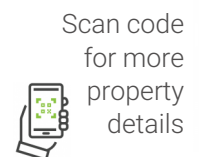
GROSS INTERNAL AREA
FLOOR 1: 1096 sq. ft. FLOOR 2: 1693 sq. ft.
FLOOR 3: 1440 sq. ft. EXCLUDED AREAS:
GARAGE: 353 sq. ft. PATIO: 469 sq. ft.
PORCH: 193 sq. ft.
TOTAL: 4229 sq. ft.

MEASUREMENTS CALCULATED BY V1Photos.com ARE DEEMED HIGHLY RELIABLE BUT NOT GUARANTEED.

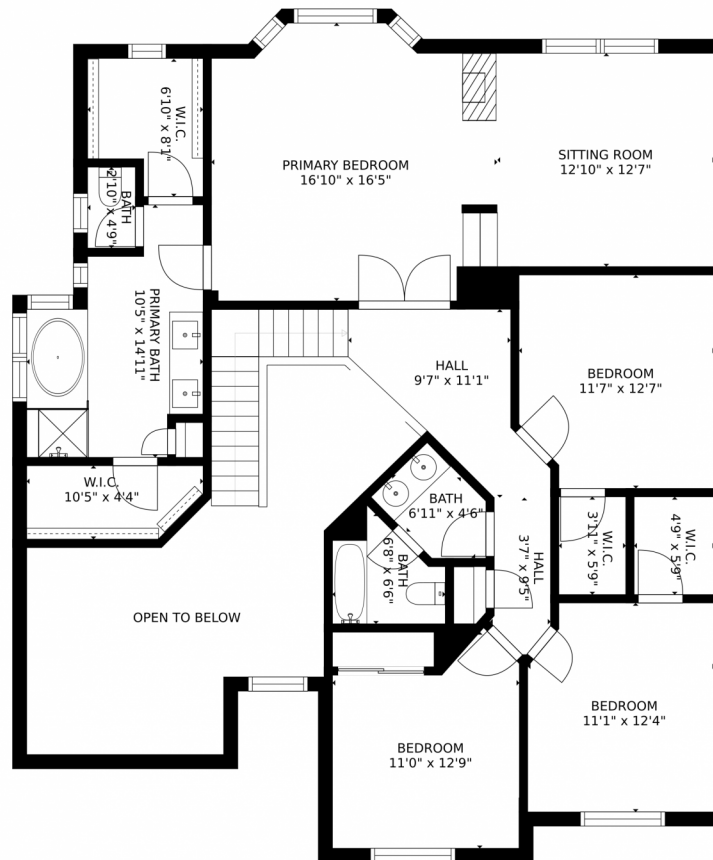
Disclaimer: Sizes and Dimensions are Approximate, Actual May Vary.



Linda Nehls
303-668-7670
linda@lindanehls.com



1996 Clipper Drive, Lafayette, CO 80026 – Second Level



GROSS INTERNAL AREA
FLOOR 1: 1096 sq. ft. FLOOR 2: 1693 sq. ft.
FLOOR 3: 1440 sq. ft. EXCLUDED AREAS:
GARAGE: 353 sq. ft. PATIO: 469 sq. ft.
PORCH: 193 sq. ft.
TOTAL: 4229 sq. ft.

MEASUREMENTS CALCULATED BY V1Photos.COM ARE DEEMED HIGHLY RELIABLE BUT NOT GUARANTEED.

Disclaimer: Sizes and Dimensions are Approximate, Actual May Vary.



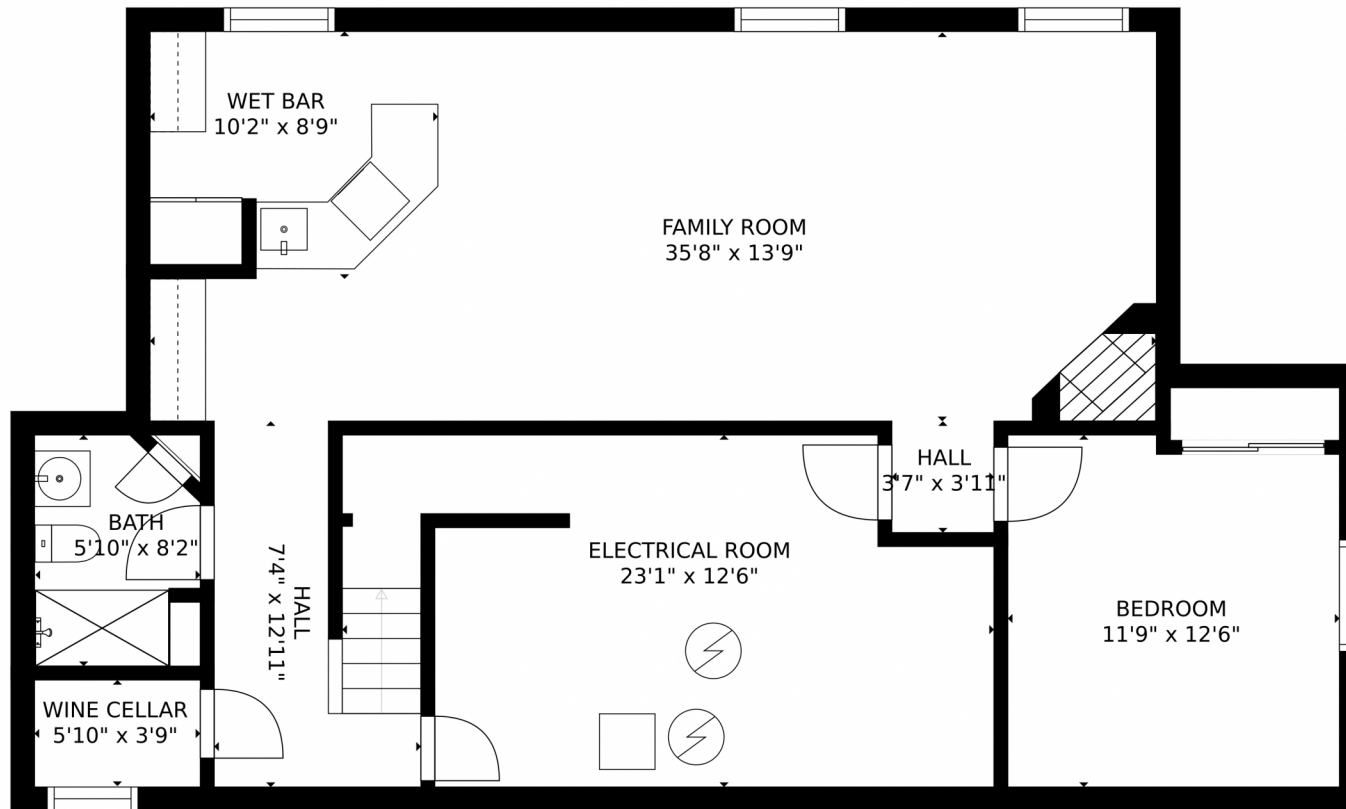
Linda Nehls
303-668-7670
linda@lindanehls.com



Scan code
for more
property
details



1996 Clipper Drive, Lafayette, CO 80026 — Basement



GROSS INTERNAL AREA
FLOOR 1: 1096 sq. ft. FLOOR 2: 1693 sq. ft.
FLOOR 3: 1440 sq. ft. EXCLUDED AREAS:
GARAGE: 353 sq. ft. PATIO: 469 sq. ft.
PORCH: 193 sq. ft.
TOTAL: 4229 sq. ft.

MEASUREMENTS CALCULATED BY V1Photos.com ARE DEEMED HIGHLY RELIABLE BUT NOT GUARANTEED.



Disclaimer: Sizes and Dimensions are Approximate, Actual May Vary.



Linda Nehls
303-668-7670
linda@lindanehls.com



Scan code
for more
property
details



1996 Clipper Drive, Lafayette, CO 80026 — All Levels



GROSS INTERNAL AREA
 FLOOR 1: 1096 sq. ft, FLOOR 2: 1693 sq. ft
 FLOOR 3: 1440 sq. ft, EXCLUDED AREAS:
 GARAGE: 353 sq. ft, PATIO: 469 sq. ft
 PORCH: 193 sq. ft
 TOTAL: 4229 sq. ft

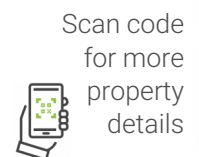
MEASUREMENTS CALCULATED BY V1Photos.COM ARE DEEMED HIGHLY RELIABLE BUT NOT GUARANTEED.



Disclaimer: Sizes and Dimensions are Approximate, Actual May Vary.



Linda Nehls
 303-668-7670
 linda@lindanehls.com



Scan code
 for more
 property
 details

