

Estimated areas

GLA FLOOR 1: 0 sq. ft, excluded 826 sq. ft
GLA FLOOR 2: 848 sq. ft, excluded 788 sq. ft
Total GLA 848 sq. ft, total scanned area 2462 sq. ft

SIZES AND DIMENSIONS ARE APPROXIMATE, ACTUAL MAY VARY.



Disclaimer: Sizes and Dimensions are Approximate, Actual May Vary.



Danielle Marcus

303-669-7974

danielle@themarkusteam.com

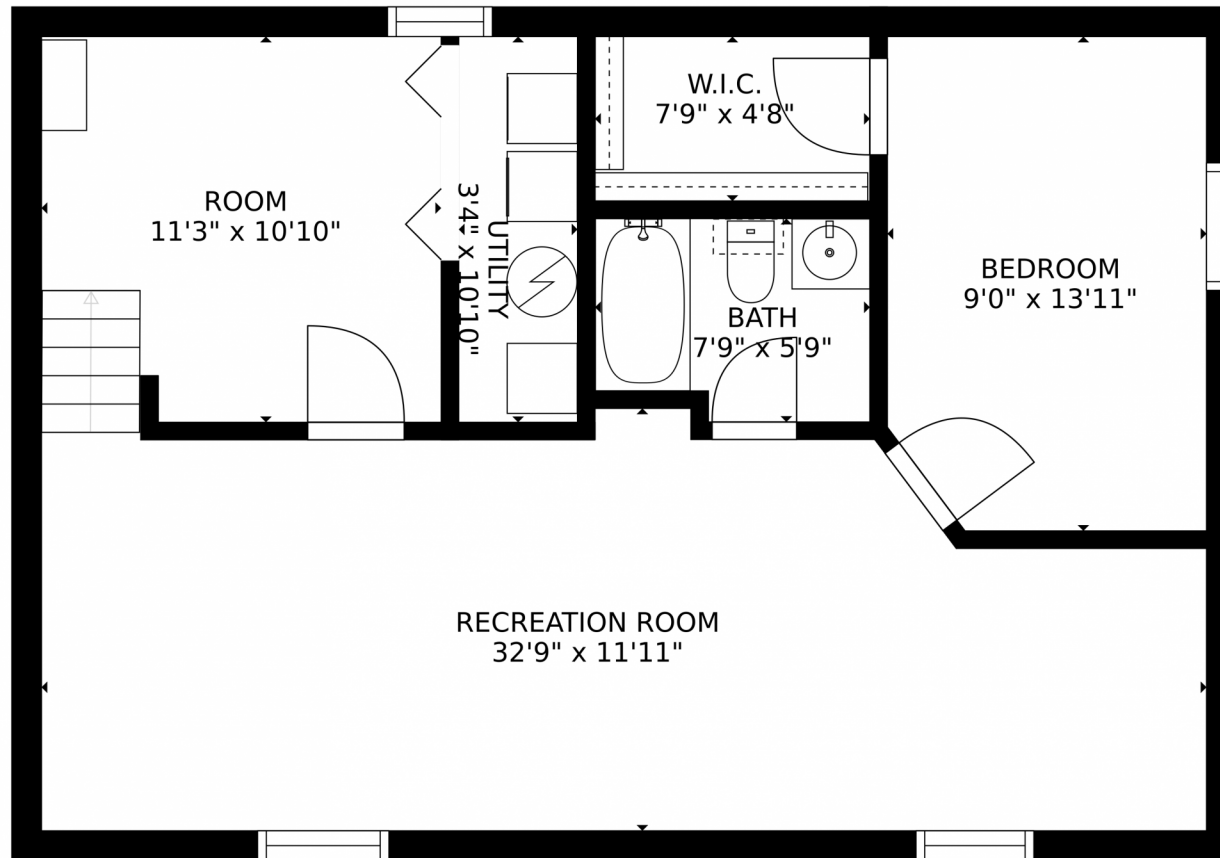
<https://www.themarkusteam.com>



Scan code
for more
property
details



6437 S Dover Street, Littleton, CO 80123 — Lower Level



Estimated areas

GLA FLOOR 1: 0 sq. ft, excluded 826 sq. ft.
GLA FLOOR 2: 848 sq. ft, excluded 788 sq. ft.
Total GLA 848 sq. ft, total scanned area 2462 sq. ft.

SIZES AND DIMENSIONS ARE APPROXIMATE, ACTUAL MAY VARY.



Disclaimer: Sizes and Dimensions are Approximate, Actual May Vary.



Danielle Marcus

303-669-7974

danielle@themarcusteam.com

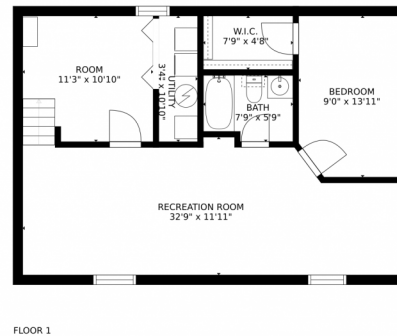
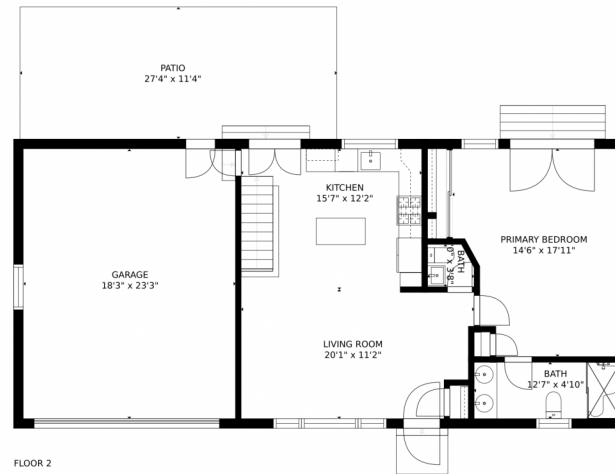
<https://www.themarcusteam.com>



Scan code
for more
property
details



6437 S Dover Street, Littleton, CO 80123 — All Levels



Estimated areas

GLA FLOOR 1: 0 sq. ft, excluded 826 sq. ft
GLA FLOOR 2: 848 sq. ft, excluded 788 sq. ft
Total GLA 848 sq. ft, total scanned area 2462 sq. ft

SIZES AND DIMENSIONS ARE APPROXIMATE, ACTUAL MAY VARY.



Disclaimer: Sizes and Dimensions are Approximate, Actual May Vary.



Danielle Marcus

303-669-7974

danielle@themarkusteam.com

<https://www.themarkusteam.com>



Scan code
for more
property
details

