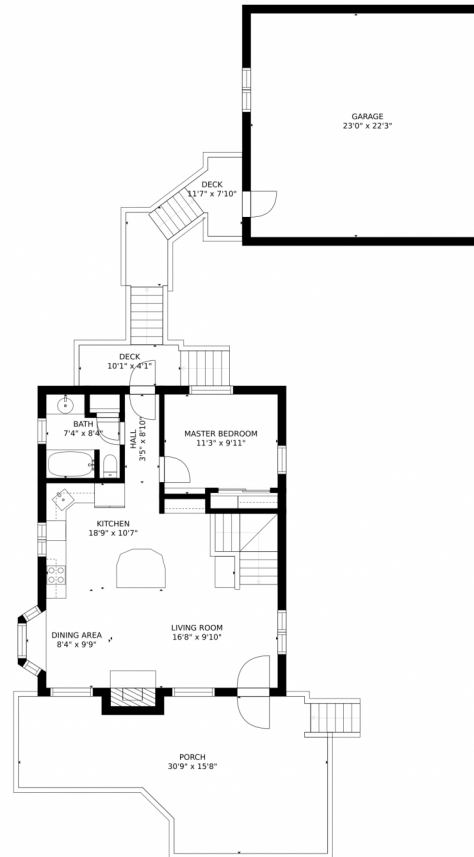


8486 South Davco Drive, Morrison, CO 80465 — Main Level

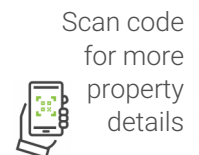


GROSS INTERNAL AREA
FLOOR 1: 679 sq. ft, FLOOR 2: 691 sq. ft
EXCLUDED AREAS: , PATIO: 249 sq. ft
DECK: 116 sq. ft, PORCH: 365 sq. ft
GARAGE: 513 sq. ft
TOTAL: 1370 sq. ft
SIZES AND DIMENSIONS ARE APPROXIMATE, ACTUAL MAY VARY.

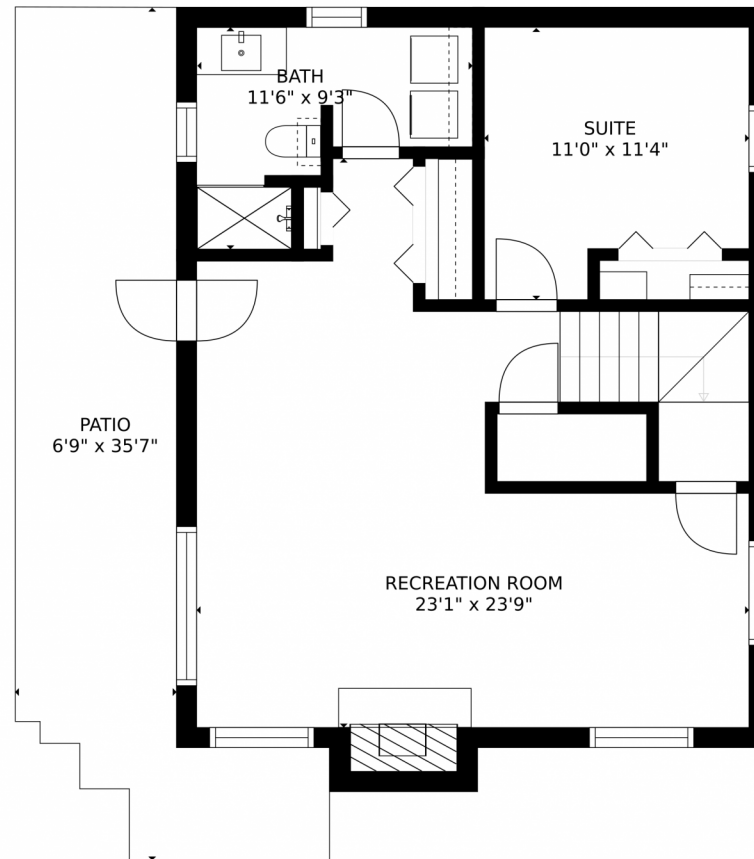
Disclaimer: Sizes and Dimensions are Approximate, Actual May Vary.



Rachel Mulvihill
303-618-0083
MoveMountains@kw.com



8486 South Davco Drive, Morrison, CO 80465 — Lower Level



GROSS INTERNAL AREA
FLOOR 1: 679 sq. ft, FLOOR 2: 691 sq. ft
EXCLUDED AREAS: , PATIO: 249 sq. ft
DECK: 116 sq. ft, PORCH: 365 sq. ft
GARAGE: 513 sq. ft
TOTAL: 1370 sq. ft
SIZES AND DIMENSIONS ARE APPROXIMATE, ACTUAL MAY VARY.

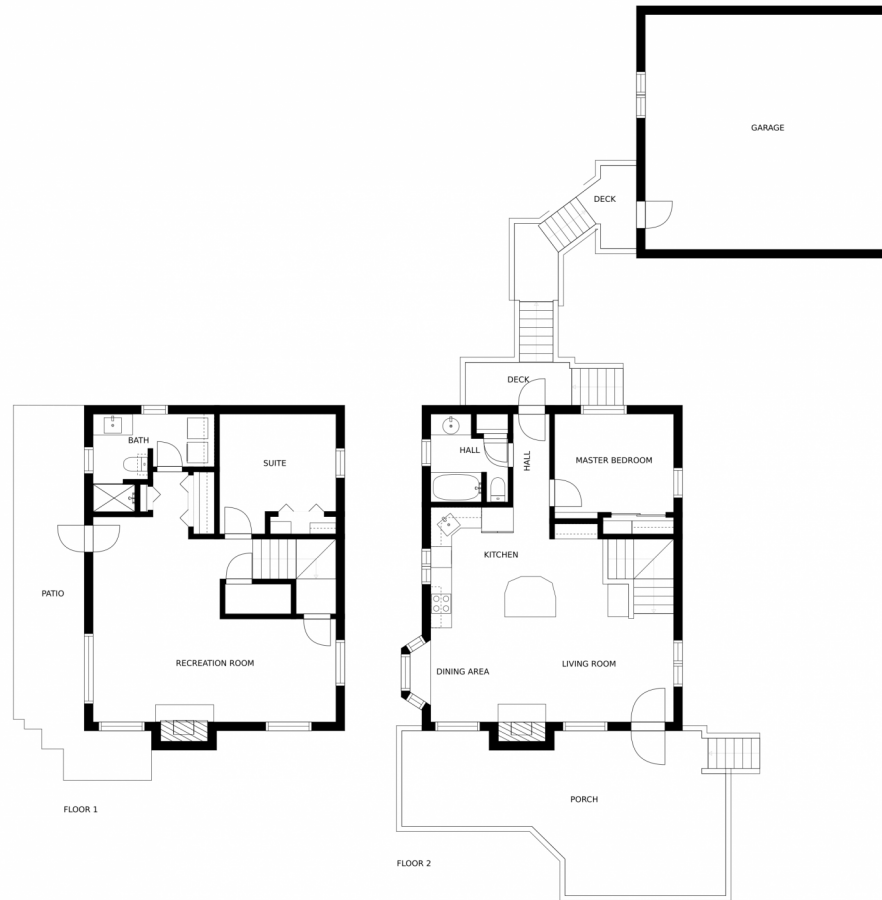
Disclaimer: Sizes and Dimensions are Approximate, Actual May Vary.



Rachel Mulvihill
303-618-0083
MoveMountains@kw.com



8486 South Davco Drive, Morrison, CO 80465 — All Floors



SIZES AND DIMENSIONS ARE APPROXIMATE, ACTUAL MAY VARY.

Disclaimer: Sizes and Dimensions are Approximate, Actual May Vary.



Rachel Mulvihill
303-618-0083
MoveMountains@kw.com



Scan code
for more
property
details

